

# Recombinant Full Length Human CITED2 Protein, C-Flag-tagged

**Cat. No.** CITED2-1582HFL    **Lot. No.** (See product label)

## SPECIFICATION

<b>Product Overview</b>	Recombinant Full Length Human CITED2 Protein, fused to Flag-tag at C-terminus, was expressed in Mammalian cells.
<b>Species</b>	Human
<b>Source</b>	Mammalian Cells
<b>Description</b>	The protein encoded by this gene inhibits transactivation of HIF1A-induced genes by competing with binding of hypoxia-inducible factor 1-alpha to p300-CH1. Mutations in this gene are a cause of cardiac septal defects. Alternatively spliced transcript variants encoding multiple isoforms have been observed for this gene.
<b>Form</b>	25 mM Tris HCl, pH 7.3, 100 mM glycine, 10% glycerol.
<b>Molecular Mass</b>	28.9 kDa
<b>AA Sequence</b>	MADHMMAMNHGRFPDGTNGLHHHPAHRMGMGQFSPHHHQQQPQHAFNALM GEHIHYGAGNMNATSGIR HAMGPGTVNGGHPPSALAPAARFNNSQFMGPPVASQ GGSLPASMQLQKLNQYFNHHPYPHNHYMPDLHP AAGHQMNNGTNQHFRDCNPK HSGGSSTPGGSGGSSTPGGSGSSSGGAGSSNSGGGSGSGNMPASVAHVPA AMLPPNVIDTDFIDEEVLMSLVIEMGLDRIKELPELWLGQNEFDFTDFVCKQQPSR VSCTRTRPLEQKLISEEDLAANDILDYKDDDDKV
<b>Purity</b>	> 80% as determined by SDS-PAGE and Coomassie blue staining.

 Tel: 1-631-559-9269    1-516-512-3133

 Email: [info@creative-biomart.com](mailto:info@creative-biomart.com)     Fax: 1-631-938-8127

 45-1 Ramsey Road, Shirley, NY 11967, USA

<b>Stability</b>	Stable for 12 months from the date of receipt of the product under proper storage and handling conditions. Avoid repeated freeze-thaw cycles.
<b>Storage</b>	Store at -80 centigrade.
<b>Concentration</b>	>50 ug/mL as determined by microplate BCA method.
<b>Preparation</b>	Recombinant protein was captured through anti-DDK affinity column followed by conventional chromatography steps.
<b>Protein Families</b>	Druggable Genome, Transcription Factors
<b>Full Length</b>	Full L.

## GENE INFORMATION

<b>Gene Name</b>	CITED2 Cbp/p300 interacting transactivator with Glu/Asp rich carboxy-terminal domain 2 [ Homo sapiens (human) ]
<b>Official Symbol</b>	CITED2
<b>Synonyms</b>	ASD8; MRG1; VSD2; MRG-1; P35SRJ
<b>Gene ID</b>	10370
<b>mRNA Refseq</b>	NM_001168388.3
<b>Protein Refseq</b>	NP_001161860.1
<b>MIM</b>	602937

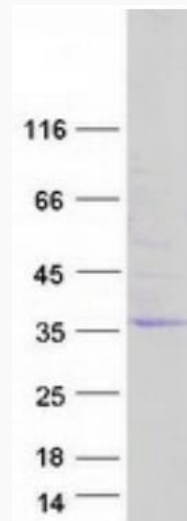
 Tel: 1-631-559-9269 1-516-512-3133

 Email: [info@creative-biomart.com](mailto:info@creative-biomart.com)  Fax: 1-631-938-8127

 45-1 Ramsey Road, Shirley, NY 11967, USA

UniProt ID

Q99967



Coomassie blue staining of purified CITED2 protein.

 Tel: 1-631-559-9269 1-516-512-3133

 Email: [info@creative-biomart.com](mailto:info@creative-biomart.com)  Fax: 1-631-938-8127

 45-1 Ramsey Road, Shirley, NY 11967, USA