

Recombinant Human CKAP4 protein, His-tagged

Cat. No. CKAP4-001H Lot. No. (See product label)

SPECIFICATION

Product Overview	Recombinant Human CKAP4 protein, His-tagged, expressed in HEK293.
Species	Human
Source	HEK293
Protein Length	128-602 aa
Molecular Mass	55 kDa
AA Sequence	HHVLEE VQQVRRSHQDFSRQREELGQGLQGVEQKVQSLQATFGTFESILRSSQHK QDLTEKAVKQGESEVSRISEVLQKLQNEILKDLSDGIHVVKDARERDFTSLENTVEER LTELTKSINDNIAIFTEVQKRSQKEINDMKAKVASLEESEGNKQDLKALKEAVKEIQTS AKSREWDMEALRSTLQTMESDIYTEVRELVSLKQEQQAFKEAADTERLALQALTEKL LRSEESVSRLPPEEIRRLEELRQLKSDSHGPKEDGGFRHSEAFEALQQKSQGLDSR LQHVEDGVLSMQVASARQTESLESLLSKSQEHEQRLAALQGRLEGLGSSEADQDG LASTVRS LGETQLVLYGDVEELKRSVGELPSTVESLQKVQE QVHTLLSQDQAQAAR LPPQDFLDRLSSLDNLKASVSQVEADLKMLRTAVDSLVAYSVKIETNENNLESAGLL DDLRNDLDRLFVKVEKIHEKVHHHHHHHHH
Purity	>90% by SDS-PAGE
Storage	Store it under sterile conditions at -20 to -80 °C. It is recommended that the protein be aliquoted for optimal storage. Avoid repeated freeze-thaw cycles.

 Tel: 1-631-559-9269 1-516-512-3133

 Email: info@creative-biomart.com  Fax: 1-631-938-8127

 45-1 Ramsey Road, Shirley, NY 11967, USA

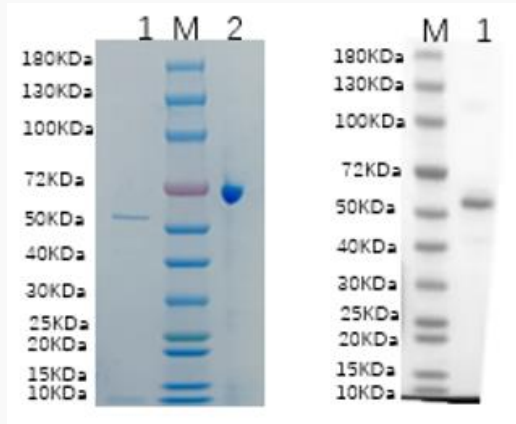
Concentration	0.5mg/ml by BCA
Storage Buffer	Sterile PBS, pH 7.4
GenelD	10970
GENE INFORMATION	
Gene Name	CKAP4 cytoskeleton associated protein 4 [Homo sapiens (human)]
Official Symbol	CKAP4
Synonyms	CKAP4; cytoskeleton-associated protein 4; CLIMP 63; ERGIC 63; P63; 63 kDa membrane protein; type-II transmembrane protein p63; 63-kDa cytoskeleton-linking membrane protein; transmembrane protein (63kD), endoplasmic reticulum/Golgi intermediate compartment; p63; CLIMP-63; ERGIC-63; MGC9955
mRNA Refseq	NM_006825
Protein Refseq	NP_006816
UniProt ID	Q07065

 Tel: 1-631-559-9269 1-516-512-3133

 Email: info@creative-biomart.com  Fax: 1-631-938-8127

 45-1 Ramsey Road, Shirley, NY 11967, USA

**Reducing 4%-20%
SDS-PAGE (CBB
stained) and WB
(Anti-His Mouse
Monoclonal
antibody) analysis
profiles of purified
CKAP4-001H**



1. CKAP4-001H
2. BSA

 Tel: 1-631-559-9269 1-516-512-3133

 Email: info@creative-biomart.com  Fax: 1-631-938-8127

 45-1 Ramsey Road, Shirley, NY 11967, USA