

Recombinant Human CKAP4 Protein, His-tagged

Cat. No. CKAP4-790H Lot. No. (See product label)

SPECIFICATION

Product Overview	Recombinant Human CKAP4 Protein (His128-Val602) with His tag was expressed in E. coli.
Species	Human
Source	E.coli
ProteinLength	His128-Val602
Description	Enables RNA binding activity. Located in several cellular components, including lipid droplet; nuclear speck; and rough endoplasmic reticulum.
Form	Freeze-dried powder
Molecular Mass	Predicted Molecular Mass: 57.7 kDa; Accurate Molecular Mass: 58 kDa
Purity	> 90%
Applications	Positive Control; Immunogen; SDS-PAGE; WB.
Stability	The thermal stability is described by the loss rate. The loss rate was determined by accelerated thermal degradation test, that is, incubate the protein at 37 centigrade for 48h, and no obvious degradation and precipitation were observed. The loss rate is less than 5% within the expiration date under appropriate storage condition.

 Tel: 1-631-559-9269 1-516-512-3133

 Email: info@creative-biomart.com  Fax: 1-631-938-8127

 45-1 Ramsey Road, Shirley, NY 11967, USA

Storage	Avoid repeated freeze/thaw cycles. Store at 2-8 centigrade for one month. Aliquot and store at -80 centigrade for 12 months.
Storage Buffer	20mM Tris, 150mM NaCl, pH8.0, containing 1mM EDTA, 1mM DTT, 0.01% SKL, 5% Trehalose and Proclin300.
Reconstitution	Reconstitute in ddH ₂ O to a concentration of 0.1-0.5 mg/mL. Do not vortex.

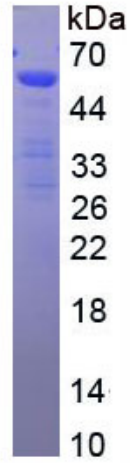
GENE INFORMATION

Gene Name	CKAP4 cytoskeleton-associated protein 4 [Homo sapiens (human)]
Official Symbol	CKAP4
Synonyms	CKAP4; cytoskeleton-associated protein 4; CLIMP 63; ERGIC 63; P63; 63 kDa membrane protein; type-II transmembrane protein p63; 63-kDa cytoskeleton-linking membrane protein; transmembrane protein (63kD), endoplasmic reticulum/Golgi intermediate compartment; p63; CLIMP-63; ERGIC-63; MGC99554;
Gene ID	10970
mRNA Refseq	NM_006825
Protein Refseq	NP_006816
MIM	618595
UniProt ID	Q07065

 Tel: 1-631-559-9269 1-516-512-3133

 Email: info@creative-biomart.com  Fax: 1-631-938-8127

 45-1 Ramsey Road, Shirley, NY 11967, USA



Tel: 1-631-559-9269 1-516-512-3133

Email: info@creative-biomart.com Fax: 1-631-938-8127

45-1 Ramsey Road, Shirley, NY 11967, USA