

# Recombinant Full Length Human CKM Protein, C-Flag-tagged

**Cat. No.** CKM-1199HFL    **Lot. No.** (See product label)

## SPECIFICATION

<b>Product Overview</b>	Recombinant Full Length Human CKM Protein, fused to Flag-tag at C-terminus, was expressed in Mammalian cells.
<b>Species</b>	Human
<b>Source</b>	Mammalian Cells
<b>Description</b>	The protein encoded by this gene is a cytoplasmic enzyme involved in energy homeostasis and is an important serum marker for myocardial infarction. The encoded protein reversibly catalyzes the transfer of phosphate between ATP and various phosphogens such as creatine phosphate. It acts as a homodimer in striated muscle as well as in other tissues, and as a heterodimer with a similar brain isozyme in heart. The encoded protein is a member of the ATP:guanido phosphotransferase protein family.
<b>Form</b>	25 mM Tris HCl, pH 7.3, 100 mM glycine, 10% glycerol.
<b>Molecular Mass</b>	42.9 kDa
<b>AA Sequence</b>	MPFGNTHNKFKLNYKPEEEYPDLSKHNNHMAKVLTLLEYKCLRDKETPSGFTVDDVI QTGVDNPGHPFIM TVGCVAGDEESYEVFKELFDPIISDRHGKPTDKHKTDLNHE NLKGGDDLDPNYVLSSRVRTGRSIKGY TLPPHCSRGERRAVEKLSVEALNSLTGEF KGKYYPLKSMTEKEQQQLIDDHFLDKPVSPLLLASGMARD WPDARGIWHNDNKS LLVWVNEEDHLRVISMEKGGNMKEVFRRFCVGLQKIEEIFKKAGHPFMWNQHLGYV LTCPSNLGTGLRGGVHVKLAHLSKHPKFEEILTRLRLQKRGTGGVDAAVGSVFDVS

 Tel: 1-631-559-9269    1-516-512-3133

 Email: [info@creative-biomart.com](mailto:info@creative-biomart.com)     Fax: 1-631-938-8127

 45-1 Ramsey Road, Shirley, NY 11967, USA

NADRLGSSEVEQV  
 QLVVDGVKLMVEMEKKLEKQSIDDMIPAQKTRTRPLEQKLISEEDLAANDILDYKDD  
 DDKV

**Purity** > 80% as determined by SDS-PAGE and Coomassie blue staining.

**Stability** Stable for 12 months from the date of receipt of the product under proper storage and handling conditions. Avoid repeated freeze-thaw cycles.

**Storage** Store at -80 centigrade.

**Concentration** >50 ug/mL as determined by microplate BCA method.

**Preparation** Recombinant protein was captured through anti-DDK affinity column followed by conventional chromatography steps.

**Protein Families** Druggable Genome

**Protein Pathways** Arginine and proline metabolism, Metabolic pathways

**Full Length** Full L.

## GENE INFORMATION

**Gene Name** CKM creatine kinase, M-type [ Homo sapiens (human) ]

**Official Symbol** CKM

**Synonyms** CKMM; M-CK; CPK-M

**Gene ID** 1158

 Tel: 1-631-559-9269 1-516-512-3133

 Email: [info@creative-biomart.com](mailto:info@creative-biomart.com)  Fax: 1-631-938-8127

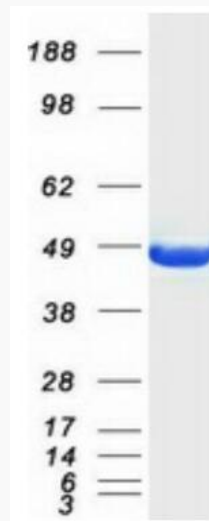
 45-1 Ramsey Road, Shirley, NY 11967, USA

mRNA Refseq [NM\\_001824.5](#)

Protein Refseq [NP\\_001815.2](#)

MIM [123310](#)

UniProt ID [P06732](#)



Coomassie blue staining of purified CKM protein.

 Tel: 1-631-559-9269 1-516-512-3133

 Email: [info@creative-biomart.com](mailto:info@creative-biomart.com)  Fax: 1-631-938-8127

 45-1 Ramsey Road, Shirley, NY 11967, USA