

Recombinant Human CKM Protein, GST-tagged

Cat. No. CKM-1397H Lot. No. (See product label)

SPECIFICATION

Product Overview Human CKM full-length ORF (AAH07462, 1 a.a. - 381 a.a.) recombinant protein with GST-tag at N-terminal.

Species Human

Source Wheat Germ

Description The protein encoded by this gene is a cytoplasmic enzyme involved in energy homeostasis and is an important serum marker for myocardial infarction. The encoded protein reversibly catalyzes the transfer of phosphate between ATP and various phosphogens such as creatine phosphate. It acts as a homodimer in striated muscle as well as in other tissues, and as a heterodimer with a similar brain isozyme in heart. The encoded protein is a member of the ATP:guanido phosphotransferase protein family. [provided by RefSeq, Jul 2008]

Molecular Mass 67.65 kDa

AA Sequence

```
MPFGNTHNKFKLNYKPEEEYPDLSKHNNHMAKVLTLLEYKCLRDKETPSGFTVDDVI
QTGVDNPGHPFIMTVGCVAGDEESYEVFKELFDPIISDCHGGYKPTDKHKTDLNHEN
LKGDDLDPNYVLSSRVRTGRSIKGYTLPPHCSRGERRAVEKLSVEALNSLAGEFK
GKYYPLKSMTEKEQQQLIDDHFLFDKPVSPLLLASGMARDWPDARGIWHNDNKSL
VWVNEEDHLRVISMEKGGNMKEVFRRFCVGLQKIEEIFKKAGHPFMWNQHLGYVLT
CPSNLGTGLRGGVHVKLAHLSKHPKFEEILTRLRLQKRGTGGVDTAAVGSVFDVSN
ADRLGSSEVEVQQLVVDGVKLMVEMEKKLEKQSIDDMIPAQK
```

 Tel: 1-631-559-9269 1-516-512-3133

 Email: info@creative-biomart.com  Fax: 1-631-938-8127

 45-1 Ramsey Road, Shirley, NY 11967, USA

Applications	Enzyme-linked Immunoabsorbent Assay Western Blot (Recombinant protein) Antibody Production Protein Array
Notes	Best use within three months from the date of receipt of this protein.
Storage	Store at -80 centigrade. Aliquot to avoid repeated freezing and thawing.
Storage Buffer	50 mM Tris-HCl, 10 mM reduced Glutathione, pH=8.0 in the elution buffer.

GENE INFORMATION

Gene Name	CKM creatine kinase, muscle [Homo sapiens]
Official Symbol	CKM
Synonyms	CKM; creatine kinase, muscle; CKMM; creatine kinase M-type; creatine kinase-M; creatine kinase M chain; M-CK;
Gene ID	1158
mRNA Refseq	NM_001824
Protein Refseq	NP_001815
MIM	123310
UniProt ID	P06732

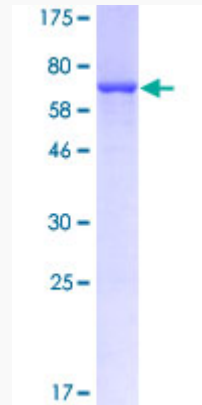
 Tel: 1-631-559-9269 1-516-512-3133

 Email: info@creative-biomart.com  Fax: 1-631-938-8127

 45-1 Ramsey Road, Shirley, NY 11967, USA

Quality Control

Testing:



12.5% SDS-PAGE Stained with Coomassie Blue.

 Tel: 1-631-559-9269 1-516-512-3133

 Email: info@creative-biomart.com  Fax: 1-631-938-8127

 45-1 Ramsey Road, Shirley, NY 11967, USA