

# Recombinant Human creatine kinase, muscle Protein, His&Flag tagged

**Cat. No.** CKM-171H    **Lot. No.** (See product label)

## SPECIFICATION

### Product Overview

Recombinant human CKM protein (P06732) (Pro 2-Lys 381) with both His, Flag tag at the C-terminus was expressed in E. coli.

### Species

Human

### Source

E.coli

### ProteinLength

2-381aa

### Description

The protein encoded by this gene is a cytoplasmic enzyme involved in energy homeostasis and is an important serum marker for myocardial infarction. The encoded protein reversibly catalyzes the transfer of phosphate between ATP and various phosphogens such as creatine phosphate. It acts as a homodimer in striated muscle as well as in other tissues, and as a heterodimer with a similar brain isozyme in heart. The encoded protein is a member of the ATP:guanido phosphotransferase protein family. Reversibly catalyzes the transfer of phosphate between ATP and various phosphogens (e.g. creatine phosphate). Creatine kinase isoenzymes play a central role in energy transduction in tissues with large, fluctuating energy demands, such as skeletal muscle, heart, brain and spermatozoa.

### Tag

C-His&Flag

### Molecular Mass

46 kDa

 Tel: 1-631-559-9269    1-516-512-3133

 Email: [info@creative-biomart.com](mailto:info@creative-biomart.com)     Fax: 1-631-938-8127

 45-1 Ramsey Road, Shirley, NY 11967, USA

<b>Endotoxin</b>	Less than 1.0 EU/μg by the LAL method.
<b>Purity</b>	>95% as determined by SDS-PAGE.
<b>Storage</b>	Please avoid repeated freeze-thaw cycles. Samples are stable for up to twelve months from date of receipt at -20 to -80 centigrade. It is recommended that aliquot the reconstituted solution to minimize freeze-thaw cycles.
<b>Storage Buffer</b>	Lyophilized from a 0.2 μm filtered solution of PBS, pH7.4, 5% Trehalose, 5% mannitol.
<b>Reconstitution</b>	Reconstitute at 250 μg/mL in sterile water.

## GENE INFORMATION

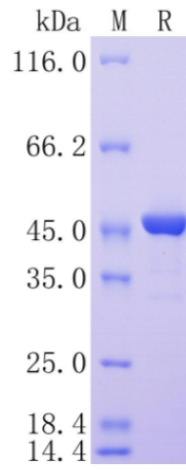
<b>Gene Name</b>	CKM creatine kinase, muscle [ <i>Homo sapiens</i> (human) ]
<b>Official Symbol</b>	CKM
<b>Synonyms</b>	CKM; creatine kinase, muscle; CKMM; creatine kinase M-type; creatine kinase-M; creatine kinase M chain; M-CK;
<b>Gene ID</b>	1158
<b>mRNA Refseq</b>	NM_001824
<b>Protein Refseq</b>	NP_001815
<b>MIM</b>	123310
<b>UniProt ID</b>	P06732

 Tel: 1-631-559-9269 1-516-512-3133

 Email: [info@creative-biomart.com](mailto:info@creative-biomart.com)  Fax: 1-631-938-8127

 45-1 Ramsey Road, Shirley, NY 11967, USA

**Protein on SDS-  
PAGE under  
reducing (R)  
condition.**



 Tel: 1-631-559-9269 1-516-512-3133

 Email: [info@creative-biomart.com](mailto:info@creative-biomart.com)  Fax: 1-631-938-8127

 45-1 Ramsey Road, Shirley, NY 11967, USA