

Recombinant Cat CKM protein

Cat. No. CKM-3533C Lot. No. (See product label)

SPECIFICATION

Product Overview	Recombinant Cat CKM protein(M3VYX8)(179-424aa) was expressed in Yeast.
Species	Cat
Source	Yeast
ProteinLength	179-424aa
Tag	Non
Form	If the delivery form is liquid, the default storage buffer is Tris/PBS-based buffer, 5%-50% glycerol. If the delivery form is lyophilized powder, the buffer before lyophilization is Tris/PBS-based buffer, 6% Trehalose, pH 8.0.
Molecular Mass	28.4 kDa
Purity	Greater than 85% as determined by SDS-PAGE.
Storage	Store at -20°C/-80°C upon receipt, aliquoting is necessary for mutiple use. Avoid repeated freeze-thaw cycles.
Reconstitution	We recommend that this vial be briefly centrifuged prior to opening to bring the contents to the bottom. Please reconstitute protein in deionized sterile water to a concentration of 0.1-1.0 mg/mL.We recommend to add 5-50% of glycerol (final concentration) and aliquot for long-term storage at -20°C/-80°C.

 Tel: 1-631-559-9269 1-516-512-3133

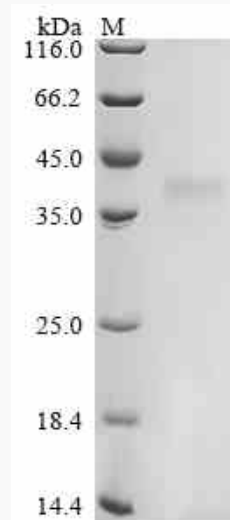
 Email: info@creative-biomart.com  Fax: 1-631-938-8127

 45-1 Ramsey Road, Shirley, NY 11967, USA

AA Sequence

SIKGYTLPPHCSRGERRAVEKLSVEALNSLTGEFKGKYYPLKSMTEQEQQQLIDDF
LFDKPVSPLLLASGMARDWPDARGIWHNDNKSFLVWVNEEDHLRVISMEKGGNMK
EVFRRFCVGLQKIEEIFKKAGHPFMWNEHLGYVLTCPNSLGTGLRGGVHVKLAHLS
KHPKFEEILTRLRLQKRGTGGVDTAAVGVSFVDSNADRLGSSEVEQVQLVVDGVKL
MVEMEKKLEKGGQSIDDMIPAQK

SDS-PAGE



 Tel: 1-631-559-9269 1-516-512-3133

 Email: info@creative-biomart.com  Fax: 1-631-938-8127

 45-1 Ramsey Road, Shirley, NY 11967, USA