

Recombinant Horse CKM protein

Cat. No. CKM-575H Lot. No. (See product label)

SPECIFICATION

Product Overview	Recombinant Horse CKM protein(F7BR99)(136-381aa) was expressed in E.coli.
Species	Horse
Source	E.coli
ProteinLength	136-381aa
Form	If the delivery form is liquid, the default storage buffer is Tris/PBS-based buffer, 5%-50% glycerol. If the delivery form is lyophilized powder, the buffer before lyophilization is Tris/PBS-based buffer, 6% Trehalose, pH 8.0.
Molecular Mass	27.9 kDa
Purity	Greater than 85% as determined by SDS-PAGE.
Storage	Store at -20°C/-80°C upon receipt, aliquoting is necessary for mutiple use. Avoid repeated freeze-thaw cycles.
Reconstitution	We recommend that this vial be briefly centrifuged prior to opening to bring the contents to the bottom. Please reconstitute protein in deionized sterile water to a concentration of 0.1-1.0 mg/mL. We recommend to add 5-50% of glycerol (final concentration) and aliquot for long-term storage at -20°C/-80°C.
AA Sequence	SIKGYTLPPHCSRGERRAVEKLSVEALNSLTGEFKGKYYPLKSMTEQEQQQLIDDFH

 Tel: 1-631-559-9269 1-516-512-3133

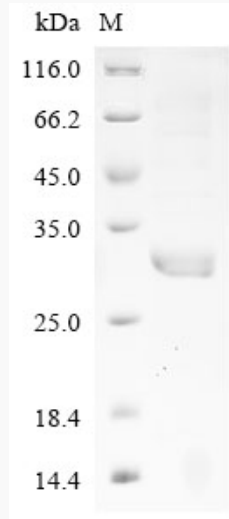
 Email: info@creative-biomart.com  Fax: 1-631-938-8127

 45-1 Ramsey Road, Shirley, NY 11967, USA



LFDKPVSPLLLASGMARDWPDARGIWHNDNKSFLVWVNEEDHLRVISMEKGGNMK
EVFRRFCVGLQKIEEIFKKAGHPFMWNEHLGYVLTCP SNLGTGLRGGVHVKLAHLS
KHPKFEEILKRLRLQKRGTGGVDTAAVGSVFDVSNADRLGSSEVEVQLVVDGVKL
MVEMEKKLEKGGQSIDDMIPAQK

SDS-PAGE



Tel: 1-631-559-9269 1-516-512-3133

Email: info@creative-biomart.com Fax: 1-631-938-8127

45-1 Ramsey Road, Shirley, NY 11967, USA