

## Recombinant Human CKS1B Protein, GST-tagged

Cat. No. CKS1B-1402H Lot. No. (See product label)

### SPECIFICATION

<b>Product Overview</b>	Human CKS1B full-length ORF ( AAH07751, 1 a.a. - 79 a.a.) recombinant protein with GST-tag at N-terminal.
<b>Species</b>	Human
<b>Source</b>	Wheat Germ
<b>Description</b>	CKS1B protein binds to the catalytic subunit of the cyclin dependent kinases and is essential for their biological function. The CKS1B mRNA is found to be expressed in different patterns through the cell cycle in HeLa cells, which reflects a specialized role for the encoded protein. At least two transcript variants have been identified for this gene, and it appears that only one of them encodes a protein. [provided by RefSeq, Sep 2008]
<b>Molecular Mass</b>	34.32 kDa
<b>AA Sequence</b>	MSHKQIYYSDKYDDEEFYRHHVMLPKDIAKLVPKTHLMSESEWRNLGVQQSQGWV HYMIHEPEPHILLFRRPLPKKPKK
<b>Applications</b>	Enzyme-linked Immunoabsorbent Assay Western Blot (Recombinant protein) Antibody Production Protein Array
<b>Notes</b>	Best use within three months from the date of receipt of this protein.

 Tel: 1-631-559-9269 1-516-512-3133

 Email: [info@creative-biomart.com](mailto:info@creative-biomart.com)  Fax: 1-631-938-8127

 45-1 Ramsey Road, Shirley, NY 11967, USA

**Storage** Store at -80 centigrade. Aliquot to avoid repeated freezing and thawing.

**Storage Buffer** 50 mM Tris-HCl, 10 mM reduced Glutathione, pH=8.0 in the elution buffer.

## GENE INFORMATION

**Gene Name** [CKS1B CDC28 protein kinase regulatory subunit 1B \[ Homo sapiens \]](#)

**Official Symbol** [CKS1B](#)

**Synonyms**

CKS1B; CDC28 protein kinase regulatory subunit 1B; CDC28 protein kinase 1B; cyclin-dependent kinases regulatory subunit 1; CKS1; ckshs1; CKS-1; PNAS-143; CDC28 protein kinase 1; CDC2-associated protein CKS1; cell division control protein CKS1; NB4 apoptosis/differentiation related protein; PNAS-16; PNAS-18;

**Gene ID** [1163](#)

**mRNA Refseq** [NM\\_001826](#)

**Protein Refseq** [NP\\_001817](#)

**MIM** [116900](#)

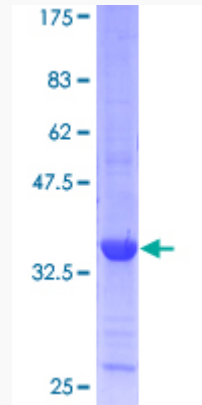
**UniProt ID** [P61024](#)

 Tel: 1-631-559-9269 1-516-512-3133

 Email: [info@creative-biomart.com](mailto:info@creative-biomart.com)  Fax: 1-631-938-8127

 45-1 Ramsey Road, Shirley, NY 11967, USA

Quality Control  
Testing:



12.5% SDS-PAGE Stained with Coomassie Blue.

 Tel: 1-631-559-9269 1-516-512-3133

 Email: [info@creative-biomart.com](mailto:info@creative-biomart.com)  Fax: 1-631-938-8127

 45-1 Ramsey Road, Shirley, NY 11967, USA