

Recombinant Human CKS1B Protein, Myc/DDK-tagged, C13 and N15-labeled

Cat. No. CKS1B-3635H **Lot. No.** (See product label)

SPECIFICATION

Product Overview	CKS1B MS Standard C13 and N15-labeled recombinant protein (NP_001817) with a C-terminal MYC/DDK tag, was expressed in HEK293 cells.
Species	Human
Source	HEK293
Description	CKS1B protein binds to the catalytic subunit of the cyclin dependent kinases and is essential for their biological function. The CKS1B mRNA is found to be expressed in different patterns through the cell cycle in HeLa cells, which reflects a specialized role for the encoded protein. At least two transcript variants have been identified for this gene, and it appears that only one of them encodes a protein.
Molecular Mass	9.7 kDa
AA Sequence	MSHKQIYYSDKYDDEEFYRHMVLPKDIKLVKTHLMSESEWRNLGVQQSQGWV HYMIHEPEPHILLFRRPLPKPKKTRTRPLEQKLISEEDLAANDILDYKDDDDKV
Purity	> 80% as determined by SDS-PAGE and Coomassie blue staining
Stability	Stable for 3 months from receipt of products under proper storage and handling conditions.
Storage	Store at -80 centigrade. Avoid repeated freeze-thaw cycles.

 Tel: 1-631-559-9269 1-516-512-3133

 Email: info@creative-biomart.com  Fax: 1-631-938-8127

 45-1 Ramsey Road, Shirley, NY 11967, USA

Concentration 50 µg/mL as determined by BCA

Storage Buffer 100 mM glycine, 25 mM Tris-HCl, pH 7.3.

GENE INFORMATION

Gene Name [CKS1B CDC28 protein kinase regulatory subunit 1B \[Homo sapiens \(human\) \]](#)

Official Symbol [CKS1B](#)

Synonyms

CKS1B; CDC28 protein kinase regulatory subunit 1B; CDC28 protein kinase 1B; cyclin-dependent kinases regulatory subunit 1; CKS1; ckshs1; CKS-1; PNAS-143; CDC28 protein kinase 1; CDC2-associated protein CKS1; cell division control protein CKS1; NB4 apoptosis/differentiation related protein; PNAS-16; PNAS-18;

Gene ID [1163](#)

mRNA Refseq [NM_001826](#)

Protein Refseq [NP_001817](#)

MIM [116900](#)

UniProt ID [P61024](#)

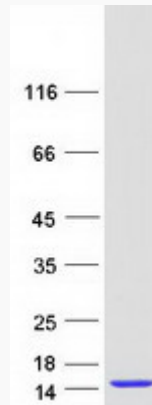
 Tel: 1-631-559-9269 1-516-512-3133

 Email: info@creative-biomart.com  Fax: 1-631-938-8127

 45-1 Ramsey Road, Shirley, NY 11967, USA



SDS-PAGE



Tel: 1-631-559-9269 1-516-512-3133

Email: info@creative-biomart.com Fax: 1-631-938-8127

45-1 Ramsey Road, Shirley, NY 11967, USA