

Recombinant Human CKS1B protein, GST-tagged

Cat. No. CKS1B-6755H Lot. No. (See product label)

SPECIFICATION

Product Overview	Recombinant Human CKS1B protein(1-79 aa), fused with N-terminal GST tag, was expressed in E.coli.
Species	Human
Source	E.coli
ProteinLength	1-79 aa
Form	The purified protein was lyophilized from sterile phosphate-buffered saline (PBS: 58 mM Na ₂ HPO ₄ , 17 mM NaH ₂ PO ₄ , 68 mM NaCl, pH 8.0). Prior to lyophilization, 5% (w/v) trehalose and 5% (w/v) mannitol were incorporated as cryoprotective excipients. The protein was eluted with a buffer containing 100 mM reduced glutathione (GSH).
AASequence	MSHKQIYYSDKYDDEEFYRHHVMLPKDIAKLVPKTHLMSESEWRNLGVQQSQGWV HYMIHEPEPHILLFRRPLPKPKK
Purity	85%, by SDS-PAGE with Coomassie Brilliant Blue staining.
Storage	Store at 2-8°C for 1-2 weeks. Aliquot and store at -20°C to -80°C for up to 3 months, reconstitution with sterile water and addition of an equal volume of glycerol. Avoid repeat freeze-thaw cycles.
Reconstitution	Dissolve the product in 200

 Tel: 1-631-559-9269 1-516-512-3133

 Email: info@creative-biomart.com  Fax: 1-631-938-8127

 45-1 Ramsey Road, Shirley, NY 11967, USA

µl sterile water to achieve a working concentration of 0.25 g/µl. If experimental compatibility allows, mix the aqueous solution with an equal volume of glycerol (1:1 ratio) after initial reconstitution.

GENE INFORMATION

Gene Name	CKS1B CDC28 protein kinase regulatory subunit 1B [Homo sapiens]
Official Symbol	CKS1B
Synonyms	CKS1B; CDC28 protein kinase regulatory subunit 1B; CDC28 protein kinase 1B; cyclin-dependent kinases regulatory subunit 1; CKS1; ckshs1; CKS-1; PNAS-143; CDC28 protein kinase 1; CDC2-associated protein CKS1; cell division control protein CKS1; NB4 apoptosis/differentiation related protein; PNAS-16; PNAS-18;
Gene ID	1163
mRNA Refseq	NM_001826
Protein Refseq	NP_001817
MIM	116900
UniProt ID	P61024

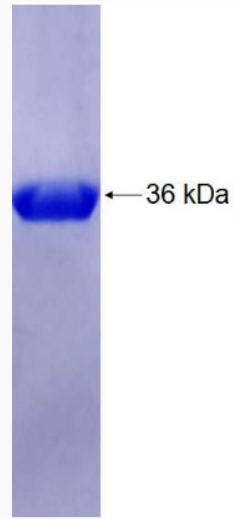
 Tel: 1-631-559-9269 1-516-512-3133

 Email: info@creative-biomart.com  Fax: 1-631-938-8127

 45-1 Ramsey Road, Shirley, NY 11967, USA



SDS-PAGE



Tel: 1-631-559-9269 1-516-512-3133

Email: info@creative-biomart.com Fax: 1-631-938-8127

45-1 Ramsey Road, Shirley, NY 11967, USA