

Recombinant Human CKS2 Protein, GST-tagged

Cat. No. CKS2-1404H **Lot. No.** (See product label)

SPECIFICATION

Product Overview	Human CKS2 full-length ORF (AAH06458, 1 a.a. - 79 a.a.) recombinant protein with GST-tag at N-terminal.
Species	Human
Source	Wheat Germ
Description	CKS2 protein binds to the catalytic subunit of the cyclin dependent kinases and is essential for their biological function. The CKS2 mRNA is found to be expressed in different patterns through the cell cycle in HeLa cells, which reflects specialized role for the encoded protein. [provided by RefSeq, Jul 2008]
Molecular Mass	34.43 kDa
AA Sequence	MAHKQIYYSDKYFDEHYEYRHVMLPRELSKQVPKTHLMSEEEWRRLGVQQSLGWV HYMIHEPEPHILLFRRPLPKDQQK
Applications	Enzyme-linked Immunoabsorbent Assay Western Blot (Recombinant protein) Antibody Production Protein Array
Notes	Best use within three months from the date of receipt of this protein.
Storage	Store at -80 centigrade. Aliquot to avoid repeated freezing and thawing.

 Tel: 1-631-559-9269 1-516-512-3133

 Email: info@creative-biomart.com  Fax: 1-631-938-8127

 45-1 Ramsey Road, Shirley, NY 11967, USA

Storage Buffer 50 mM Tris-HCl, 10 mM reduced Glutathione, pH=8.0 in the elution buffer.

GENE INFORMATION

Gene Name CKS2 CDC28 protein kinase regulatory subunit 2 [Homo sapiens]

Official Symbol CKS2

Synonyms CKS2; CDC28 protein kinase regulatory subunit 2; CDC28 protein kinase 2; cyclin-dependent kinases regulatory subunit 2; CKS-2; CKS1(S. cerevisiae Cdc28/Cdc2 kinase subunit) homolog-2; CKSHS2;

Gene ID 1164

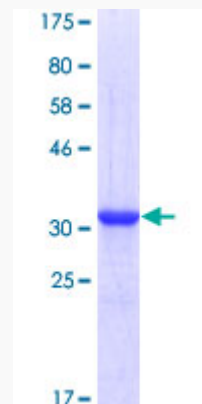
mRNA Refseq NM_001827

Protein Refseq NP_001818

MIM 116901

UniProt ID P33552

Quality Control Testing:



 Tel: 1-631-559-9269 1-516-512-3133

 Email: info@creative-biomart.com  Fax: 1-631-938-8127

 45-1 Ramsey Road, Shirley, NY 11967, USA



12.5% SDS-PAGE Stained with Coomassie Blue.

 Tel: 1-631-559-9269 1-516-512-3133

 Email: info@creative-biomart.com  Fax: 1-631-938-8127

 45-1 Ramsey Road, Shirley, NY 11967, USA