

# Recombinant Human CKS2 Protein, Myc/DDK-tagged, C13 and N15-labeled

**Cat. No.** CKS2-4980H    **Lot. No.** (See product label)

## SPECIFICATION

<b>Product Overview</b>	CKS2 MS Standard C13 and N15-labeled recombinant protein (NP_001818) with a C-terminal MYC/DDK tag, was expressed in HEK293 cells.
<b>Species</b>	Human
<b>Source</b>	HEK293
<b>Description</b>	CKS2 protein binds to the catalytic subunit of the cyclin dependent kinases and is essential for their biological function. The CKS2 mRNA is found to be expressed in different patterns through the cell cycle in HeLa cells, which reflects specialized role for the encoded protein.
<b>Molecular Mass</b>	9.9 kDa
<b>AA Sequence</b>	MAHKQIYYSDKYFDEHYEYRHVMLPRELSKQVPKTHLMSEEEWRRLGVQQSLGWV HYMIHEPEPHILLFRRPLPKDQQKTRTRPLEQKLISEEDLAANDILDYKDDDDKV
<b>Purity</b>	> 80% as determined by SDS-PAGE and Coomassie blue staining
<b>Stability</b>	Stable for 3 months from receipt of products under proper storage and handling conditions.
<b>Storage</b>	Store at -80 centigrade. Avoid repeated freeze-thaw cycles.

 Tel: 1-631-559-9269    1-516-512-3133

 Email: [info@creative-biomart.com](mailto:info@creative-biomart.com)     Fax: 1-631-938-8127

 45-1 Ramsey Road, Shirley, NY 11967, USA

**Concentration** 50 µg/mL as determined by BCA

**Storage Buffer** 100 mM glycine, 25 mM Tris-HCl, pH 7.3.

## GENE INFORMATION

**Gene Name** [CKS2 CDC28 protein kinase regulatory subunit 2 \[ Homo sapiens \(human\) \]](#)

**Official Symbol** [CKS2](#)

**Synonyms** CKS2; CDC28 protein kinase regulatory subunit 2; CDC28 protein kinase 2; cyclin-dependent kinases regulatory subunit 2; CKS-2; CKS1(S. cerevisiae Cdc28/Cdc2 kinase subunit) homolog-2; CKSHS2;

**Gene ID** [1164](#)

**mRNA Refseq** [NM\\_001827](#)

**Protein Refseq** [NP\\_001818](#)

**MIM** [116901](#)

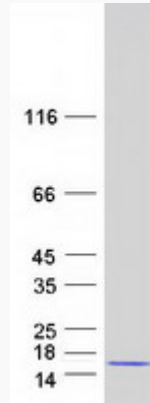
**UniProt ID** [P33552](#)

 Tel: 1-631-559-9269 1-516-512-3133

 Email: [info@creative-biomart.com](mailto:info@creative-biomart.com)  Fax: 1-631-938-8127

 45-1 Ramsey Road, Shirley, NY 11967, USA

**SDS-PAGE**



 Tel: 1-631-559-9269 1-516-512-3133

 Email: [info@creative-biomart.com](mailto:info@creative-biomart.com)  Fax: 1-631-938-8127

 45-1 Ramsey Road, Shirley, NY 11967, USA