

Recombinant Human CLCC1 Protein, GST-tagged

Cat. No. CLCC1-1412H Lot. No. (See product label)

SPECIFICATION

Product Overview	Human CLCC1 full-length ORF (NP_055942.1, 1 a.a. - 501 a.a.) recombinant protein with GST-tag at N-terminal.
Species	Human
Source	Wheat Germ
Description	CLCC1 (Chloride Channel CLIC Like 1) is a Protein Coding gene. GO annotations related to this gene include chloride channel activity.
Molecular Mass	82.7 kDa
AA Sequence	<p>MLCSLLLCECLLLVAGYAHDDDWIDPTDMLNYDAASGTMRSQAKYGISGEKDVSP DLSCADEISECYHKLDSLTYKIDECEKKKREDYEQSNPVFRRYLNKILIEAGKLGLFH DFETWKWRFEDSFGVDPYNVLMVLLCLLCIVVLVATELWTVRWTQLRRVLIISFLF SLGWNWMYLYKLAFQAQAEVAKMEPLNNVCAKKMDWTGSIWEWFRSSWTYKD DPCQKYYELLLVNIWLVPTKALAVTFTTFVTEPLKHIGKGTGEFIKALMKEIPALLHL PVLIIIMALAILSFCYGAGKSVHVLRHIGGPESEPPQALRPRDRRRQEEIDYRPDGGAG DADFHYRGQMGPTEQGPYAKTYEGRREILRERDVLRFQTGNKSPEVLRADFVDP AEAREHPTVVP SHKSPVLDTKPKETGGILGEGTPKESSTESSQSAKPVSGQDTSGN TEGSPA AEKAQLKSEAAGSPDQGSTYSPARGVAGPRGQDPVSSPCG</p>
Applications	<p>Enzyme-linked Immunoabsorbent Assay Western Blot (Recombinant protein) Antibody Production</p>

 Tel: 1-631-559-9269 1-516-512-3133

 Email: info@creative-biomart.com  Fax: 1-631-938-8127

 45-1 Ramsey Road, Shirley, NY 11967, USA

Protein Array

Notes	Best use within three months from the date of receipt of this protein.
Storage	Store at -80 centigrade. Aliquot to avoid repeated freezing and thawing.
Storage Buffer	50 mM Tris-HCl, 10 mM reduced Glutathione, pH=8.0 in the elution buffer.

GENE INFORMATION

Gene Name	CLCC1 chloride channel CLIC-like 1 [Homo sapiens]
Official Symbol	CLCC1
Synonyms	CLCC1; chloride channel CLIC-like 1; chloride channel CLIC-like protein 1; MCLC; Mid1 related chloride channel (yeast); Mid1-related chloride channel; Mid-1-related chloride channel 1; mid-1-related chloride channel protein 1; KIAA0761; RP11-475E11.6;
Gene ID	23155
mRNA Refseq	NM_001048210
Protein Refseq	NP_001041675
MIM	617539
UniProt ID	Q96S66

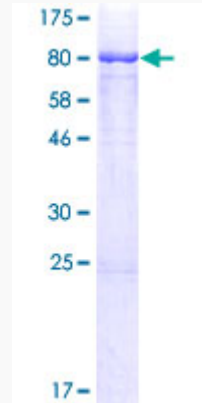
 Tel: 1-631-559-9269 1-516-512-3133

 Email: info@creative-biomart.com  Fax: 1-631-938-8127

 45-1 Ramsey Road, Shirley, NY 11967, USA

Quality Control

Testing:



12.5% SDS-PAGE Stained with Coomassie Blue.

 Tel: 1-631-559-9269 1-516-512-3133

 Email: info@creative-biomart.com  Fax: 1-631-938-8127

 45-1 Ramsey Road, Shirley, NY 11967, USA