

Recombinant Human CLCF1 Protein, GST-tagged

Cat. No. CLCF1-1413H Lot. No. (See product label)

SPECIFICATION

Product Overview	Human CLCF1 full-length ORF (AAH12939, 29 a.a. - 225 a.a.) recombinant protein with GST-tag at N-terminal.
Species	Human
Source	Wheat Germ
Description	<p>This gene is a member of the glycoprotein (gp)130 cytokine family and encodes cardiotrophin-like cytokine factor 1 (CLCF1). CLCF1 forms a heterodimer complex with cytokine receptor-like factor 1 (CRLF1). This dimer competes with ciliary neurotrophic factor (CNTF) for binding to the ciliary neurotrophic factor receptor (CNTFR) complex, and activates the Jak-STAT signaling cascade. CLCF1 can be actively secreted from cells by forming a complex with soluble type I CRLF1 or soluble CNTFR. CLCF1 is a potent neurotrophic factor, B-cell stimulatory agent and neuroendocrine modulator of pituitary corticotroph function. Defects in CLCF1 cause cold-induced sweating syndrome 2 (CISS2). This syndrome is characterized by a profuse sweating after exposure to cold as well as congenital physical abnormalities of the head and spine. Alternative splicing results in multiple transcript variants encoding distinct isoforms.[provided by RefSeq, Oct 2009]</p>
Molecular Mass	47.41 kDa
AA Sequence	NRTGDPGPGPSIQKTYDLTRYLEHQLRSLAGTYLNYLGPPFNEPDFNPPRLGAETLP RATVDLEVWRSLNDKLRRLTQNYEAYSHLLCYLRGLNRQAATAELRRSLAHFCTSLQ

 Tel: 1-631-559-9269 1-516-512-3133

 Email: info@creative-biomart.com  Fax: 1-631-938-8127

 45-1 Ramsey Road, Shirley, NY 11967, USA

GLLGSIAQVMAALGYPLPQPLPGTEPTWTPGPAHSDFLQKMDDFWLLKELQTWLW
 RSAKDFNRLKKKMPPAAAVTLHLGAHGF

Applications	Enzyme-linked Immunoabsorbent Assay Western Blot (Recombinant protein) Antibody Production Protein Array
Notes	Best use within three months from the date of receipt of this protein.
Storage	Store at -80 centigrade. Aliquot to avoid repeated freezing and thawing.
Storage Buffer	50 mM Tris-HCl, 10 mM reduced Glutathione, pH=8.0 in the elution buffer.

GENE INFORMATION

Gene Name	CLCF1 <i>cardiotrophin-like cytokine factor 1 [Homo sapiens]</i>
Official Symbol	CLCF1
Synonyms	CLCF1; cardiotrophin-like cytokine factor 1; CRLF1 associated cytokine like factor 1; B cell stimulating factor 3; BSF 3; BSF3; CISS2; CLC; cold induced sweating syndrome 2; NNT 1; NNT1; novel neurotrophin 1; NR6; novel neurotrophin-1; B-cell stimulating factor 3; B-cell stimulatory factor 3; B-cell-stimulating factor 3; CRLF1 associated cytokine-like factor 1; neurotrophin-1/B-cell stimulating factor-3; BSF-3; NNT-1;
Gene ID	23529
mRNA Refseq	NM_001166212

 Tel: 1-631-559-9269 1-516-512-3133

 Email: info@creative-biomart.com  Fax: 1-631-938-8127

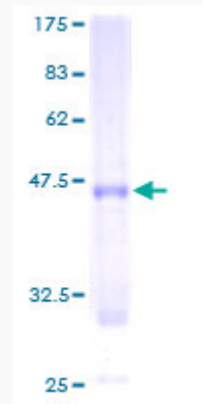
 45-1 Ramsey Road, Shirley, NY 11967, USA

Protein Refseq NP_001159684

MIM 607672

UniProt ID Q9UBD9

**Quality Control
Testing:**



12.5% SDS-PAGE Stained with Coomassie Blue.

 Tel: 1-631-559-9269 1-516-512-3133

 Email: info@creative-biomart.com  Fax: 1-631-938-8127

 45-1 Ramsey Road, Shirley, NY 11967, USA