

Recombinant Human CLCF1 protein

Cat. No. CLCF1-30449TH Lot. No. (See product label)

SPECIFICATION

Product Overview	Recombinant Human CLCF1 protein was expressed in Escherichia coli.
Species	Human
Source	E.coli
ProteinLength	198
Description	Novel Neurotrophin-1 (NNT-1) or B-Cell Stimulating Factor-3 (BSF-3), is a new member of the IL-6 family of structurally related cytokines that includes IL-6, CNTF, LIF, CT-1, IL-11 and OSM. All family members share the receptor subunit gp130 that belong to the type I cytokine receptor superfamily. Ligand binding leads to gp130 homodimerization or heterodimerization (with LIF receptor or OSM receptor beta), and induces cell signaling and functional activity. For several family members, including CNTF, IL-6, and IL-11, binding of the ligand to a specific receptor alpha subunit (CNTF R alpha, IL-6 R alpha, or IL-11 R alpha) is required prior to gp130 homo- or hetero-dimerization.
Form	Lyophilized from a 0.2µm filtered concentrated solution in 30 % Acetonitrile and 0.1 % TFA.
Bio-activity	Fully biologically active when compared to standard. The ED50 as determined by a cell proliferation assay using human TF-1 cells is less than 4 ng/ml, corresponding to a specific activity of > 2.5 × 10 ⁵ IU/mg in the presence of human CNTF R alpha.

 Tel: 1-631-559-9269 1-516-512-3133

 Email: info@creative-biomart.com  Fax: 1-631-938-8127

 45-1 Ramsey Road, Shirley, NY 11967, USA

Molecular Mass	Approximately 22.3 kDa, a single non-glycosylated polypeptide chain containing 198 amino acids.
AA Sequence	LNRTGDPGPGPSIQKTYDLTRYLEHQLRSLAGTYLNYLGPPFNPDFNPPRLGAETL PRATVDLEVWRSLNDKLRRLTQNYEAYSHLLCYLRGLNRQAATAELRRSLAHFCTSL QGLLGSIAGVMAALGYPLPQPLPGTEPTWTPGPAHSDFLQKMDDFWLLKELQTWL WRSKDFNRLKKKMQPPAAAVTLHLGAHGF
Endotoxin	Less than 0.1 EU/μg of rHuNNT-1/BCSF-3 as determined by LAL method.
Purity	>98% by SDS-PAGE and HPLC analysis.
Storage	Use a manual defrost freezer and avoid repeated freeze-thaw cycles. 12 months from date of receipt, -20 to -70 centigrade as supplied. 1 month, 2 to 8 centigrade under sterile conditions after reconstitution. 3 months, -20 to -70 centigrade under sterile conditions after reconstitution.
Reconstitution	We recommend that this vial be briefly centrifuged prior to opening to bring the contents to the bottom. Reconstitute in sterile distilled water or aqueous buffer containing 0.1 % BSA to a concentration of 0.1-1.0 mg/mL. Stock solutions should be apportioned into working aliquots and stored at ≤-20 centigrade. Further dilutions should be made in appropriate buffered solutions.

GENE INFORMATION

Gene Name	CLCF1
Official Symbol	CLCF1
Synonyms	CLCF1; cardiotrophin-like cytokine factor 1; CRLF1 associated cytokine like factor 1; B cell stimulating factor 3; BSF 3; BSF3; CISS2; CLC; cold induced sweating

 Tel: 1-631-559-9269 1-516-512-3133

 Email: info@creative-biomart.com  Fax: 1-631-938-8127

 45-1 Ramsey Road, Shirley, NY 11967, USA

syndrome 2; NNT 1; NNT1; novel neurotrophin 1; NR6; novel neurotrophin-1; B-cell stimulating factor 3; B-cell stimulatory factor 3; B-cell-stimulating factor 3; CRLF1 associated cytokine-like factor 1; neurotrophin-1/B-cell stimulating factor-3; BSF-3; NNT-1;

Gene ID [23529](#)

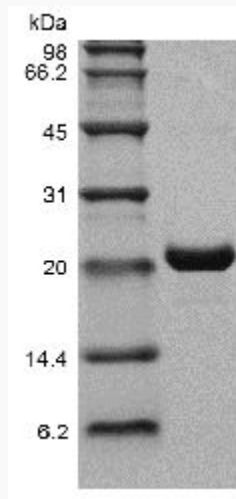
mRNA Refseq [NM_001166212](#)

Protein Refseq [NP_001159684](#)

MIM [607672](#)

UniProt ID [Q9UBD9](#)

**SDS-PAGE of
CLCF1-30449TH**



 Tel: 1-631-559-9269 1-516-512-3133

 Email: info@creative-biomart.com  Fax: 1-631-938-8127

 45-1 Ramsey Road, Shirley, NY 11967, USA