

Recombinant Human CLCF1 protein, Fc-tagged

Cat. No. CLCF1-351H **Lot. No.** (See product label)

SPECIFICATION

Product Overview	Recombinant Human CLCF1 protein(NP_037378.1)(Leu28-Phe225) was expressed in HEK293 with the fused Fc region of human IgG1 at the N-terminus.
Species	Human
Source	HEK293
ProteinLength	28-225 aa
Form	Lyophilized from sterile PBS, pH 7.4.
Molecular Mass	The recombinant human CLCF1/Fc is a disulfide-linked homodimer. The reduced monomer comprises 458 amino acids and has a predicted molecular mass of 50.7 kDa. The apparent molecular mass of the protein is approximately 54 kDa in SDS-PAGE under reducing conditions.
Endotoxin	< 1.0 EU per µg of the protein as determined by the LAL method.
Purity	> 85 % as determined by SDS-PAGE
Storage	Store it under sterile conditions at -20°C to -80°C upon receiving. Recommend to aliquot the protein into smaller quantities for optimal storage. Avoid repeated freeze-thaw cycles.
Reconstitution	It is recommended that sterile water be added to the vial to prepare a stock solution of

 Tel: 1-631-559-9269 1-516-512-3133

 Email: info@creative-biomart.com  Fax: 1-631-938-8127

 45-1 Ramsey Road, Shirley, NY 11967, USA

0.2 ug/ul. Centrifuge the vial at 4°C before opening to recover the entire contents.

protein Refseq-Weblink http://www.ncbi.nlm.nih.gov/protein/NP_001159684.1

Unit ID Q9UBD9

Unit ID-Weblink <http://www.uniprot.org/uniprot/Q9UBD9>

GENE INFORMATION

Gene Name [CLCF1 cardiostrophin-like cytokine factor 1 \[Homo sapiens \]](#)

Official Symbol [CLCF1](#)

Synonyms CLCF1; cardiostrophin-like cytokine factor 1; CRLF1 associated cytokine like factor 1; B cell stimulating factor 3; BSF 3; BSF3; CISS2; CLC; cold induced sweating syndrome 2; NNT 1; NNT1; novel neurotrophin 1; NR6; novel neurotrophin-1; B-cell stimulating factor 3; B-cell stimulatory factor 3; B-cell-stimulating factor 3; CRLF1 associated cytokine-like factor 1; neurotrophin-1/B-cell stimulating factor-3; BSF-3; NNT-1;

Gene ID [23529](#)

mRNA Refseq [NM_001166212](#)

protein Refseq [NP_001159684](#)

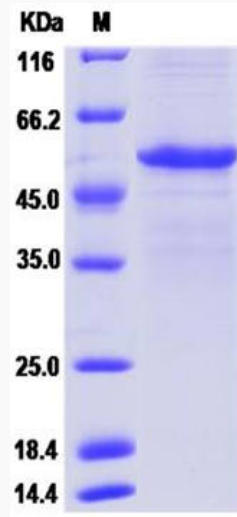
MIM [607672](#)

 Tel: 1-631-559-9269 1-516-512-3133

 Email: info@creative-biomart.com  Fax: 1-631-938-8127

 45-1 Ramsey Road, Shirley, NY 11967, USA

SDS-PAGE



 Tel: 1-631-559-9269 1-516-512-3133

 Email: info@creative-biomart.com  Fax: 1-631-938-8127

 45-1 Ramsey Road, Shirley, NY 11967, USA