

Recombinant Human CLCF1 Protein, Myc/DDK-tagged, C13 and N15-labeled

Cat. No. CLCF1-5167H **Lot. No.** (See product label)

SPECIFICATION

Product Overview

CLCF1 MS Standard C13 and N15-labeled recombinant protein (NP_037378) with a C-terminal MYC/DDK tag, was expressed in HEK293 cells.

Species

Human

Source

HEK293

Description

This gene is a member of the glycoprotein (gp)130 cytokine family and encodes cardiotrophin-like cytokine factor 1 (CLCF1). CLCF1 forms a heterodimer complex with cytokine receptor-like factor 1 (CRLF1). This dimer competes with ciliary neurotrophic factor (CNTF) for binding to the ciliary neurotrophic factor receptor (CNTFR) complex, and activates the Jak-STAT signaling cascade. CLCF1 can be actively secreted from cells by forming a complex with soluble type I CRLF1 or soluble CNTFR. CLCF1 is a potent neurotrophic factor, B-cell stimulatory agent and neuroendocrine modulator of pituitary corticotroph function. Defects in CLCF1 cause cold-induced sweating syndrome 2 (CISS2). This syndrome is characterized by a profuse sweating after exposure to cold as well as congenital physical abnormalities of the head and spine. Alternative splicing results in multiple transcript variants encoding distinct isoforms.

Molecular Mass

25.2 kDa

AA Sequence

MDLRAGDSWGMLACLCTVLWHLPAVPALNRTGDPGPGPSIQKTYDLTRYLEHQLR

 Tel: 1-631-559-9269 1-516-512-3133

 Email: info@creative-biomart.com  Fax: 1-631-938-8127

 45-1 Ramsey Road, Shirley, NY 11967, USA

SLAGTYLNYLGPPFNEPDFNPPRLGAETLPRATVDLEVWRSLNDKLRLTQNYEAYS
 HLLCYLRGLNRQAATAELRRSLAHFCTSLQGLLGSAGVMAALGYPLPQPLPGTEPT
 WTPGPAHSDFLQKMDDFWLLKELQTLWRSKDFNRLKKKMQPPAAAVTLHLGAH
 GFTRTRPLEQKLISEEDLAANDILDYKDDDDKV

Purity > 80% as determined by SDS-PAGE and Coomassie blue staining

Stability Stable for 3 months from receipt of products under proper storage and handling conditions.

Storage Store at -80 centigrade. Avoid repeated freeze-thaw cycles.

Concentration 50 µg/mL as determined by BCA

Storage Buffer 100 mM glycine, 25 mM Tris-HCl, pH 7.3.

GENE INFORMATION

Gene Name [CLCF1 cardiostrophin-like cytokine factor 1 \[Homo sapiens \(human\) \]](#)

Official Symbol [CLCF1](#)

Synonyms CLCF1; cardiostrophin-like cytokine factor 1; CRLF1 associated cytokine like factor 1; B cell stimulating factor 3; BSF 3; BSF3; CISS2; CLC; cold induced sweating syndrome 2; NNT 1; NNT1; novel neurotrophin 1; NR6; novel neurotrophin-1; B-cell stimulating factor 3; B-cell stimulatory factor 3; B-cell-stimulating factor 3; CRLF1 associated cytokine-like factor 1; neurotrophin-1/B-cell stimulating factor-3; BSF-3; NNT-1;

Gene ID [23529](#)

 Tel: 1-631-559-9269 1-516-512-3133

 Email: info@creative-biomart.com  Fax: 1-631-938-8127

 45-1 Ramsey Road, Shirley, NY 11967, USA

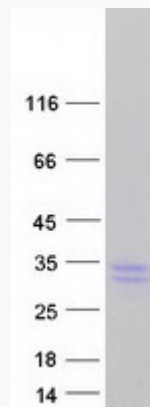
mRNA Refseq [NM_013246](#)

Protein Refseq [NP_037378](#)

MIM [607672](#)

UniProt ID [Q9UBD9](#)

SDS-PAGE



 Tel: 1-631-559-9269 1-516-512-3133

 Email: info@creative-biomart.com  Fax: 1-631-938-8127

 45-1 Ramsey Road, Shirley, NY 11967, USA