

Recombinant Human CLCN1 cell lysate, Myc/DDK-tagged

Cat. No. CLCN1-01HCL Lot. No. (See product label)

SPECIFICATION

Product Overview

Transient overexpression lysate of chloride channel 1, skeletal muscle (CLCN1) with a C-Myc/DDK tag was expressed HEK293T.

Components:

1 vial of 100 µg gene specific transient over-expression cell lysate in RIPA buffer

1 vial of 100 µg empty vector transfected control cell lysate in RIPA buffer

1 vial of 250 µL 2xSDS Sample Buffer (4% SDS, 125mM Tris-HCl pH6.8, 10% Glycerol, 0.002% Bromphenol blue, 100mM DTT)

Preparation: HEK293T cells in 10-cm dishes were transiently transfected with MegaTran Transfection Reagent and 5 µg TrueORF cDNA plasmid. Transfected cells were cultured for 48hrs before collection. The cells were lysed in modified RIPA buffer (25mM Tris-HCl pH7.6, 150mM NaCl, 1% NP-40, 1mM EDTA, 1xProteinase inhibitor cocktail mix (Sigma), 1mM PMSF and 1mM Na₃VO₄), and then centrifuged to clarify the lysate. Protein concentration was measured by BCA kit. Cell lysates were aliquoted and stored at -20 centigrade before shipping.

Species

Human

Source

HEK293

Description

The CLCN family of voltage-dependent chloride channel genes comprises nine members (CLCN1-7, Ka and Kb) which demonstrate quite diverse functional characteristics while sharing significant sequence homology. The protein encoded by this gene regulates the electric excitability of the skeletal muscle membrane. Mutations in this gene cause two forms of inherited human muscle disorders:

 Tel: 1-631-559-9269 1-516-512-3133

 Email: info@creative-biomart.com  Fax: 1-631-938-8127

 45-1 Ramsey Road, Shirley, NY 11967, USA

	recessive generalized myotonia congenita (Becker) and dominant myotonia (Thomsen). Alternative splicing results in multiple transcript variants.
Molecular Mass	108.6 kDa
Stability	Lysate samples are stable for 12 months from the date of receipt when stored at -80 centigrade.
Storage	Upon receiving, store the sample at -80 centigrade. Also after dilution, the protein sample should be aliquoted and stored at -80 centigrade for long term storage. Avoid repeated freeze-thaw cycles.
Storage Buffer	Lysate samples can be diluted with 2xSDS Sample Buffer provided.
Shipping	Dry ice

GENE INFORMATION

Gene Name	CLCN1 chloride voltage-gated channel 1 [Homo sapiens (human)]
Official Symbol	CLCN1
Synonyms	CLCN1; chloride voltage-gated channel 1; CLC1; chloride channel protein 1; chloride channel 1, skeletal muscle; chloride channel protein, skeletal muscle; chloride channel, voltage-sensitive 1; cIC-1
Gene ID	1180
mRNA Refseq	NM_000083
Protein Refseq	NP_000074

 Tel: 1-631-559-9269 1-516-512-3133

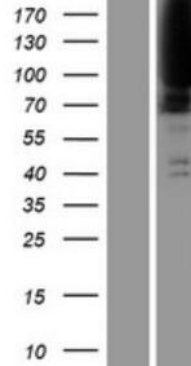
 Email: info@creative-biomart.com  Fax: 1-631-938-8127

 45-1 Ramsey Road, Shirley, NY 11967, USA

MIM

118425

WB



Western blot validation of overexpression lysate using anti-DDK antibody.

Left: Cell lysates from un-transfected HEK293T cells

Right: Cell lysates from HEK293T cells transfected with CLCN1 cDNA Clone

 Tel: 1-631-559-9269 1-516-512-3133

 Email: info@creative-biomart.com  Fax: 1-631-938-8127

 45-1 Ramsey Road, Shirley, NY 11967, USA