

Recombinant Human CLCN1 Protein, GST-tagged

Cat. No. CLCN1-1414H Lot. No. (See product label)

SPECIFICATION

Product Overview	Human CLCN1 full-length ORF (AAI11587.1, 1 a.a. - 988 a.a.) recombinant protein with GST-tag at N-terminal.
Species	Human
Source	Wheat Germ
Description	<p>The CLCN family of voltage-dependent chloride channel genes comprises nine members (CLCN1-7, Ka and Kb) which demonstrate quite diverse functional characteristics while sharing significant sequence homology. The protein encoded by this gene regulates the electric excitability of the skeletal muscle membrane. Mutations in this gene cause two forms of inherited human muscle disorders: recessive generalized myotonia congenita (Becker) and dominant myotonia (Thomsen). Alternative splicing results in multiple transcript variants. [provided by RefSeq, Mar 2012]</p>
Molecular Mass	135.63 kDa
AA Sequence	<p>MEQRSRSQQRGGEQSWWGSDPQYQYMPFEHCTSYGLPSENGGLQHRLRKDAGPR HNVHPTQIYGGHHKEQFSDREQDIGMPKKTGSSSTVDSKDEDHYSKCQDCIHRLGQV VRRKLGEDGIFLVLLGLLMALVSWMDYVSAKSLQAYKWSYAQMQLPLQFLVWV TFPLVLILFSALFCHLISPQAVGSGIPEMKTILRGVVLKEYLTMKAFVAKVVALTAGLG SGIPVGKEGPFVHIASICAAVLSKFMVFCGVYEQPYYSYDILTVGCAVGVGCCFCGT PLGGVLFSEVTSTYFAVRNYWRGFFAATFSAFVFRVLAVWNKDAVTITALFRTNFR</p>

 Tel: 1-631-559-9269 1-516-512-3133

 Email: info@creative-biomart.com  Fax: 1-631-938-8127

 45-1 Ramsey Road, Shirley, NY 11967, USA

MDFPFDLKELPAFAAIGICCGLLGAVFVYLHRQVMLGVRKHKALSQFLAKHRLLYPGI
 VTFVIASFTFPPGMGQFMAGELMPREAISTLFDNNTWVKHAGDPESLGQSASVWIHP
 RVNVVIIIFLFFVMKFWMSIVATTMPIPCGGFMPVFLGAAFGRLVGEIMAMLPDGL
 FDDIYKILPGGYAVIGAAALTGAVSHTVSTAVICFELTGQIAHILPMMVAVILANMVAQ
 SLQPSLYDSIIQVKKLPYLPDLGWNQLSKYTIFVEDIMVRDVKFVSASYTYGELRLLQ
 TTTVKTLPLVDSKDSMILLGSVERSELQALLQRHLCPEPRLRAAQEMARKLSELPYD
 GKARLAGEGLPGAPPGRPESFAFVDEDEDEDLSGKSELPPSLALHPSTTAPLSPEE
 PNGPLPGHKQQPEAPEPAGQRPSIFQSLHCLLGRARPTKKKTTQDSTDLVDNMSP
 EEIEAWEQEQLSQPVCFDSCCIDQSPFQLVEQTTLHKHTLFSLLGLHLAYVTSMGK
 LRGVLALEELQKAIEGHTKSGVQLRPPLASFRNTTSTRKSTGAPPSSAENWNLPEDR
 PGATGTGDVIAASPETPVSPSPPEPPLSLAPGKVEGELEEELELVESPGLEEEELADILQ
 GPSLRSTDEEDEDELIL

Applications

Enzyme-linked Immunoabsorbent Assay
 Western Blot (Recombinant protein)
 Antibody Production
 Protein Array

Notes

Best use within three months from the date of receipt of this protein.

Storage

Store at -80 centigrade. Aliquot to avoid repeated freezing and thawing.

Storage Buffer

50 mM Tris-HCl, 10 mM reduced Glutathione, pH=8.0 in the elution buffer.

GENE INFORMATION

Gene Name

CLCN1 chloride channel, voltage-sensitive 1 [*Homo sapiens*]

Official Symbol

CLCN1

Synonyms

CLCN1; chloride channel, voltage-sensitive 1; chloride channel 1, skeletal muscle;

 Tel: 1-631-559-9269 1-516-512-3133

 Email: info@creative-biomart.com  Fax: 1-631-938-8127

 45-1 Ramsey Road, Shirley, NY 11967, USA

chloride channel protein 1; CIC 1; CLC1; Thomsen disease; autosomal dominant; cIC-1; chloride channel protein, skeletal muscle; MGC138361; MGC142055;

Gene ID 1180

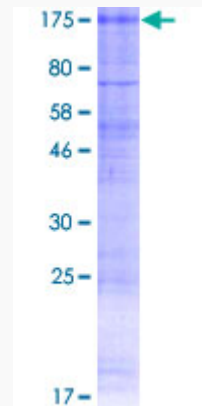
mRNA Refseq NM_000083

Protein Refseq NP_000074

MIM 118425

UniProt ID P35523

**Quality Control
Testing:**



12.5% SDS-PAGE Stained with Coomassie Blue.

 Tel: 1-631-559-9269 1-516-512-3133

 Email: info@creative-biomart.com  Fax: 1-631-938-8127

 45-1 Ramsey Road, Shirley, NY 11967, USA