

Recombinant Human CLCN3 Full Length Transmembrane protein, His-tagged

Cat. No. CLCN3-0481H Lot. No. (See product label)

SPECIFICATION

Product Overview	Recombinant Human CLCN3 protein(1-818aa)(P51790), fused to C-terminal His tag, was expressed in E. coli.
Species	Human
Source	E.coli
ProteinLength	1-818aa
Form	<p>If the delivery form is liquid, the default storage buffer is Tris/PBS-based buffer, 5%-50% glycerol.</p> <p>If the delivery form is lyophilized powder, the buffer before lyophilization is Tris/PBS-based buffer, 6% Trehalose, pH 8.0.</p>
Molecular Mass	93.2 kDa
AA Sequence	<p>MASMTGGQQMGRDPMSEQLFHRGYRNSYNSITSASSDEELLDGAGVIMDFQTS EDDNLDDGDTAVGTHYTMNNGSINSSTHLLDLLDEPIPGVGTYYDDFHTIDWVREKC KDRERHRRINSKKKESAWEMTKSLYDAWSGWLVVTLTGLASGALAGLIDIAADWMT DLKEGICLSALWYNHEQCCWGSNETTFFERDKCPQWKTWAEIIGQAEGPGSYIMN YIMYIFWALSFAFLAVSLVKVFAPYACGSGIPEIKTILSGFIIRGYLGKWTLMIKTITLVLA VASGLSLGKEGPLVHVACCCGNIFSYLFPKYSTNEAKKREVLSAASAAGVSVAFGAP IGGVLFSLLEEVSYYPFLKTLWRSFFAALVAAFVLRSPFGNSRLVLFYVEYHTPWYL FELFPFILLGVFGGLWGFAFFIRANIAWCRRRKSTKFGKYPVLEVIIVAAITAVIAFPNPY</p>

 Tel: 1-631-559-9269 1-516-512-3133

 Email: info@creative-biomart.com  Fax: 1-631-938-8127

 45-1 Ramsey Road, Shirley, NY 11967, USA

TRLNTSELIKELFTDCGPLESSSLCDYRNDMNASKIVDDIPDRPAGIGVYSIAIWQLCL
 ALIFKIIIMTVFTFGIKVPSGLFIPSMAGIAIAGRIVGIAVEQLAYYHHDWFIFKEWCEVGA
 DCITPGLYAMVGAAACLGGVTRMTVSLVVIVFELTGGLEYIVPLMAAVMTSKWVGDA
 FGREGIYEAHIRLNGYPFLDAKEEFTHHTLAADVMPRRNDPPLAVLTQDNMTVDDI
 ENMINETSYNGFPVIMSKESQRLVGFALRRDLTIAIESARKKQEGIVGSSRVCFQAHT
 PSLPAESRPLKLSILDMSPTVTDHTPMEIVVDIFRKLGLRQCLVTHNGRLLGIITK
 KDILRHMAQTANQDPASIMFN

Purity Greater than 85% as determined by SDS-PAGE.

Storage Store at -20°C/-80°C upon receipt, aliquoting is necessary for mutiple use. Avoid repeated freeze-thaw cycles.

Reconstitution Please reconstitute protein in deionized sterile water to a concentration of 0.1-1.0 mg/mL. We recommend to add 5-50% of glycerol (final concentration) and aliquot for long-term storage at -20°C/-80°C. Our default final concentration of glycerol is 50%.

GENE INFORMATION

Gene Name [CLCN3 chloride channel, voltage-sensitive 3 \[Homo sapiens \]](#)

Official Symbol [CLCN3](#)

Synonyms CLCN3; chloride channel, voltage-sensitive 3; chloride channel 3; H(+)/Cl(-) exchange transporter 3; CIC 3; CLC3; chloride channel protein 3; chloride transporter CIC-3; CIC-3; DKFZp564I0463;

Gene ID [1182](#)

mRNA Refseq [NM_001243372](#)

 Tel: 1-631-559-9269 1-516-512-3133

 Email: info@creative-biomart.com  Fax: 1-631-938-8127

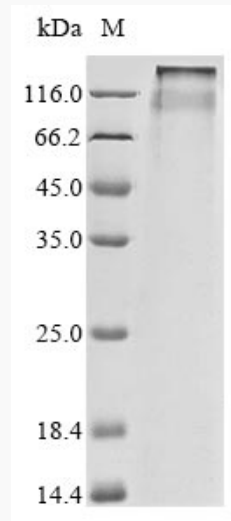
 45-1 Ramsey Road, Shirley, NY 11967, USA

Protein Refseq NP_001230301

MIM 600580

UniProt ID P51790

SDS-PAGE



 Tel: 1-631-559-9269 1-516-512-3133

 Email: info@creative-biomart.com  Fax: 1-631-938-8127

 45-1 Ramsey Road, Shirley, NY 11967, USA