

Recombinant Human CLCN3 Protein, GST-tagged

Cat. No. CLCN3-1417H Lot. No. (See product label)

SPECIFICATION

Product Overview Human CLCN3 partial ORF (NP_001820.2, 1 a.a. - 99 a.a.) recombinant protein with GST-tag at N-terminal.

Species Human

Source Wheat Germ

Description This gene encodes a member of the voltage-gated chloride channel (ClC) family. The encoded protein is present in all cell types and localized in plasma membranes and in intracellular vesicles. It is a multi-pass membrane protein which contains a ClC domain and two additional C-terminal CBS (cystathionine beta-synthase) domains. The ClC domain catalyzes the selective flow of Cl⁻ ions across cell membranes, and the CBS domain may have a regulatory function. This protein plays a role in both acidification and transmitter loading of GABAergic synaptic vesicles, and in smooth muscle cell activation and neointima formation. This protein is required for lysophosphatidic acid (LPA)-activated Cl⁻ current activity and fibroblast-to-myofibroblast differentiation. The protein activity is regulated by Ca(2+)/calmodulin-dependent protein kinase II (CaMKII) in glioma cells. Multiple alternatively spliced transcript variants encoding different isoforms have been identified. [provided by RefSeq, Aug 2011]

Molecular Mass 36.63 kDa

AA Sequence MESEQLFHRGYRNSYNSITSASSDEELLDGAGVIMDFQTSEDDNLLDGDTAVGTH

 Tel: 1-631-559-9269 1-516-512-3133

 Email: info@creative-biomart.com  Fax: 1-631-938-8127

 45-1 Ramsey Road, Shirley, NY 11967, USA

YTMTNGGSINSSTHLLDLLDEPIPGVGTYYDDFHTIDWVREKCK

Applications

Enzyme-linked Immunoabsorbent Assay
 Western Blot (Recombinant protein)
 Antibody Production
 Protein Array

Notes

Best use within three months from the date of receipt of this protein.

Storage

Store at -80 centigrade. Aliquot to avoid repeated freezing and thawing.

Storage Buffer

50 mM Tris-HCl, 10 mM reduced Glutathione, pH=8.0 in the elution buffer.

GENE INFORMATION

Gene Name

[CLCN3 chloride channel, voltage-sensitive 3 \[Homo sapiens \]](#)

Official Symbol

[CLCN3](#)

Synonyms

CLCN3; chloride channel, voltage-sensitive 3; chloride channel 3; H(+)/Cl(-) exchange transporter 3; CIC 3; CLC3; chloride channel protein 3; chloride transporter CIC-3; CIC-3; DKFZp564I0463;

Gene ID

[1182](#)

mRNA Refseq

[NM_001243372](#)

Protein Refseq

[NP_001230301](#)

MIM

[600580](#)

 Tel: 1-631-559-9269 1-516-512-3133

 Email: info@creative-biomart.com  Fax: 1-631-938-8127

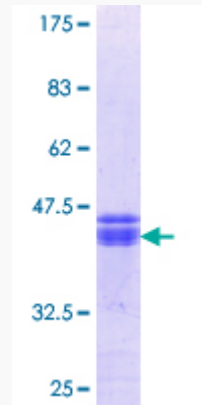
 45-1 Ramsey Road, Shirley, NY 11967, USA

UniProt ID

P51790

Quality Control

Testing:



12.5% SDS-PAGE Stained with Coomassie Blue.

 Tel: 1-631-559-9269 1-516-512-3133

 Email: info@creative-biomart.com  Fax: 1-631-938-8127

 45-1 Ramsey Road, Shirley, NY 11967, USA