

Recombinant Human CLCN7 Protein, GST-tagged

Cat. No. CLCN7-1422H Lot. No. (See product label)

SPECIFICATION

Product Overview	Human CLCN7 partial ORF (NP_001278, 706 a.a. - 805 a.a.) recombinant protein with GST-tag at N-terminal.
Species	Human
Source	Wheat Germ
Description	<p>The product of this gene belongs to the CLC chloride channel family of proteins. Chloride channels play important roles in the plasma membrane and in intracellular organelles. This gene encodes chloride channel 7. Defects in this gene are the cause of osteopetrosis autosomal recessive type 4 (OPTB4), also called infantile malignant osteopetrosis type 2 as well as the cause of autosomal dominant osteopetrosis type 2 (OPTA2), also called autosomal dominant Albers-Schonberg disease or marble disease autosomal dominant. Osteopetrosis is a rare genetic disease characterized by abnormally dense bone, due to defective resorption of immature bone. OPTA2 is the most common form of osteopetrosis, occurring in adolescence or adulthood.</p> <p>[provided by RefSeq, Jul 2008]</p>
Molecular Mass	36.74 kDa
AA Sequence	LRLKDFRDAYPRFPPIQSIHVSQDERECTMDLSEFMNPSPYTVPQEASLPRVFKLFR ALGLRHLVVVDNRNQVVGLVTRKDLARYRLGKRGLEELSLAQT
Applications	Enzyme-linked Immunoabsorbent Assay Western Blot (Recombinant protein)

 Tel: 1-631-559-9269 1-516-512-3133

 Email: info@creative-biomart.com  Fax: 1-631-938-8127

 45-1 Ramsey Road, Shirley, NY 11967, USA

	Antibody Production Protein Array
Notes	Best use within three months from the date of receipt of this protein.
Storage	Store at -80 centigrade. Aliquot to avoid repeated freezing and thawing.
Storage Buffer	50 mM Tris-HCl, 10 mM reduced Glutathione, pH=8.0 in the elution buffer.
GENE INFORMATION	
Gene Name	CLCN7 chloride channel, voltage-sensitive 7 [Homo sapiens]
Official Symbol	CLCN7
Synonyms	CLCN7; chloride channel, voltage-sensitive 7; chloride channel 7; H(+)/Cl(-) exchange transporter 7; CLC 7; CIC 7; CLC7; OPTA2; PPP1R63; protein phosphatase 1; regulatory subunit 63; chloride channel protein 7; protein phosphatase 1, regulatory subunit 63; CLC-7; OPTB4; FLJ26686; FLJ39644; FLJ46423;
Gene ID	1186
mRNA Refseq	NM_001114331
Protein Refseq	NP_001107803
MIM	602727
UniProt ID	P51798

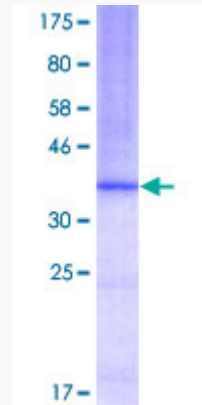
 Tel: 1-631-559-9269 1-516-512-3133

 Email: info@creative-biomart.com  Fax: 1-631-938-8127

 45-1 Ramsey Road, Shirley, NY 11967, USA

Quality Control

Testing:



12.5% SDS-PAGE Stained with Coomassie Blue.

 Tel: 1-631-559-9269 1-516-512-3133

 Email: info@creative-biomart.com  Fax: 1-631-938-8127

 45-1 Ramsey Road, Shirley, NY 11967, USA