

Recombinant Human CLDN11 Protein, GST-tagged

Cat. No. CLDN11-1427H Lot. No. (See product label)

SPECIFICATION

Product Overview	Human CLDN11 full-length ORF (NP_005593.2, 1 a.a. - 207 a.a.) recombinant protein with GST-tag at N-terminal.
Species	Human
Source	Wheat Germ
Description	<p>This gene encodes a member of the claudin family. Claudins are integral membrane proteins and components of tight junction strands. Tight junction strands serve as a physical barrier to prevent solutes and water from passing freely through the paracellular space between epithelial or endothelial cell sheets, and also play critical roles in maintaining cell polarity and signal transductions. The protein encoded by this gene is a major component of central nervous system (CNS) myelin and plays an important role in regulating proliferation and migration of oligodendrocytes. Mouse studies showed that the gene deficiency results in deafness and loss of the Sertoli cell epithelial phenotype in the testis. This protein is a tight junction protein at the human blood-testis barrier (BTB), and the BTB disruption is related to a dysfunction of this gene. Alternatively spliced transcript variants encoding different isoforms have been identified.[provided by RefSeq, Aug 2010]</p>
Molecular Mass	48.4 kDa
AA Sequence	MVATCLQVVG FVTSFVGWIGVIVTTSTNDWVVTCGYTIPTCRKLDDELGSKGLWADC VMATGLYHCKPLVDILILPGYVQACRALMIAASVLGLPAILLLLTVLPCIRMGQEPGVA

 Tel: 1-631-559-9269 1-516-512-3133

 Email: info@creative-biomart.com  Fax: 1-631-938-8127

 45-1 Ramsey Road, Shirley, NY 11967, USA

KYRRAQLAGVLLILLALCALVATIWFVCAHRETTIVSFGYSLYAGWIGAVLCLVGGC
VILCCAGDAQAFGENRFYYTAGSSSPHAKSAHV

Applications	Enzyme-linked Immunoabsorbent Assay Western Blot (Recombinant protein) Antibody Production Protein Array
Notes	Best use within three months from the date of receipt of this protein.
Storage	Store at -80 centigrade. Aliquot to avoid repeated freezing and thawing.
Storage Buffer	50 mM Tris-HCl, 10 mM reduced Glutathione, pH=8.0 in the elution buffer.

GENE INFORMATION

Gene Name	CLDN11 claudin 11 [Homo sapiens]
Official Symbol	CLDN11
Synonyms	OSP; OTM
Gene ID	5010
mRNA Refseq	NM_005602.5
Protein Refseq	NP_005593.2
MIM	601326
UniProt ID	O75508

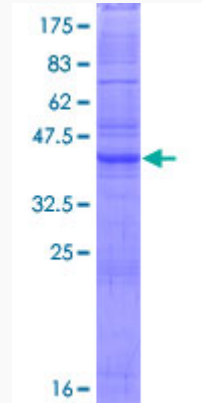
 Tel: 1-631-559-9269 1-516-512-3133

 Email: info@creative-biomart.com  Fax: 1-631-938-8127

 45-1 Ramsey Road, Shirley, NY 11967, USA

Quality Control

Testing:



12.5% SDS-PAGE Stained with Coomassie Blue.

 Tel: 1-631-559-9269 1-516-512-3133

 Email: info@creative-biomart.com  Fax: 1-631-938-8127

 45-1 Ramsey Road, Shirley, NY 11967, USA