

Recombinant Human CLDN12 Protein, GST-tagged

Cat. No. CLDN12-1429H Lot. No. (See product label)

SPECIFICATION

Product Overview	Human CLDN12 full-length ORF (AAH36754.1, 1 a.a. - 244 a.a.) recombinant protein with GST-tag at N-terminal.
Species	Human
Source	Wheat Germ
Description	This gene encodes a member of the claudin family. Claudins are integral membrane proteins and components of tight junction strands. Tight junction strands serve as a physical barrier to prevent solutes and water from passing freely through the paracellular space between epithelial or endothelial cell sheets, and also play critical roles in maintaining cell polarity and signal transductions. This gene is expressed in the inner ear and bladder epithelium, and it is over-expressed in colorectal carcinomas. This protein and claudin 2 are critical for vitamin D-dependent Ca ²⁺ absorption between enterocytes. Multiple alternatively spliced transcript variants encoding the same protein have been found.[provided by RefSeq, Sep 2011]
Molecular Mass	52.58 kDa
AA Sequence	MGCRDVHAATVLSFLCGIASVAGLFAGTLLPNWRKLRLITFNRNEKNLTVYTGLWVK CARYDGSSDCLMYDTTWYSSVDQLDLRVLQFALPLSMLIAMGALLLCLIGMCNTAFR SSVPNIKLA KCLVNSAGCHLVAGLLFFLAGTVSLSPSIWVIFYNIHLNKKFEPVFSFDY AVYVTIASAGGLFMTSLILFIWYCTCKSLPSPFWQPLYSHPPSMHTYSQPYSARSRL SAIEIDIPVVSHTT

 Tel: 1-631-559-9269 1-516-512-3133

 Email: info@creative-biomart.com  Fax: 1-631-938-8127

 45-1 Ramsey Road, Shirley, NY 11967, USA

Applications	Enzyme-linked Immunoabsorbent Assay Western Blot (Recombinant protein) Antibody Production Protein Array
Notes	Best use within three months from the date of receipt of this protein.
Storage	Store at -80 centigrade. Aliquot to avoid repeated freezing and thawing.
Storage Buffer	50 mM Tris-HCl, 10 mM reduced Glutathione, pH=8.0 in the elution buffer.

GENE INFORMATION

Gene Name	CLDN12 claudin 12 [Homo sapiens]
Official Symbol	CLDN12
Synonyms	CLDN12; claudin 12; claudin-12;
Gene ID	9069
mRNA Refseq	NM_001185072
Protein Refseq	NP_001172001
MIM	611232
UniProt ID	P56749

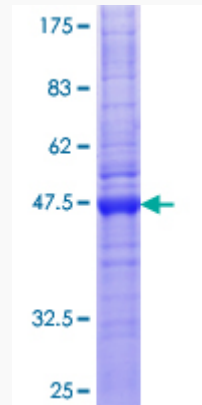
 Tel: 1-631-559-9269 1-516-512-3133

 Email: info@creative-biomart.com  Fax: 1-631-938-8127

 45-1 Ramsey Road, Shirley, NY 11967, USA

Quality Control

Testing:



12.5% SDS-PAGE Stained with Coomassie Blue.

 Tel: 1-631-559-9269 1-516-512-3133

 Email: info@creative-biomart.com  Fax: 1-631-938-8127

 45-1 Ramsey Road, Shirley, NY 11967, USA