

Recombinant Human CLDN14 Protein, GST-tagged

Cat. No. CLDN14-1430H Lot. No. (See product label)

SPECIFICATION

Product Overview	Human CLDN14 full-length ORF (NP_036262.1, 1 a.a. - 239 a.a.) recombinant protein with GST-tag at N-terminal.
Species	Human
Source	Wheat Germ
Description	<p>Tight junctions represent one mode of cell-to-cell adhesion in epithelial or endothelial cell sheets, forming continuous seals around cells and serving as a physical barrier to prevent solutes and water from passing freely through the paracellular space. These junctions are comprised of sets of continuous networking strands in the outwardly facing cytoplasmic leaflet, with complementary grooves in the inwardly facing extracytoplasmic leaflet. The protein encoded by this gene, a member of the claudin family, is an integral membrane protein and a component of tight junction strands. The encoded protein also binds specifically to the WW domain of Yes-associated protein. Defects in this gene are the cause of an autosomal recessive form of nonsyndromic sensorineural deafness. It is also reported that four synonymous variants in this gene are associated with kidney stones and reduced bone mineral density. Several transcript variants encoding the same protein have been found for this gene. [provided by RefSeq, Jun 2010]</p>
Molecular Mass	52.1 kDa
AA Sequence	MASTAVQLLGFLLSFLGMVGLTITLPHWRRTAHVGTNILTAVSYLKGLWMECVWH

 Tel: 1-631-559-9269 1-516-512-3133

 Email: info@creative-biomart.com  Fax: 1-631-938-8127

 45-1 Ramsey Road, Shirley, NY 11967, USA

STGIYQCQIYRSLALPQDLQAARALMVISCLLSGIACACAVIGMKCTRCAKGTPAKT
 TFAILGGTLFILAGLLCMVAVSWTTNDVVQNFYNPLLPSPGMKFEIGQALYLGFISSLS
 LIGGTLCLSCQDEAPYRPYQAPPRATTTTANTAPAYQPPAAYKDNRAPSVTSATHS
 GYRLNDYV

Applications	Enzyme-linked Immunoabsorbent Assay Western Blot (Recombinant protein) Antibody Production Protein Array
Notes	Best use within three months from the date of receipt of this protein.
Storage	Store at -80 centigrade. Aliquot to avoid repeated freezing and thawing.
Storage Buffer	50 mM Tris-HCl, 10 mM reduced Glutathione, pH=8.0 in the elution buffer.

GENE INFORMATION

Gene Name	CLDN14 claudin 14 [Homo sapiens]
Official Symbol	CLDN14
Synonyms	CLDN14; claudin 14; DFNB29; claudin-14;
Gene ID	23562
mRNA Refseq	NM_001146077
Protein Refseq	NP_001139549
MIM	605608

 Tel: 1-631-559-9269 1-516-512-3133

 Email: info@creative-biomart.com  Fax: 1-631-938-8127

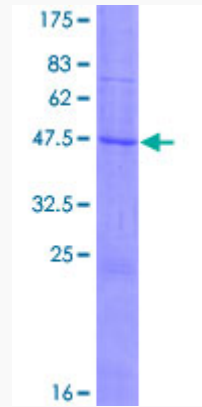
 45-1 Ramsey Road, Shirley, NY 11967, USA

UniProt ID


O95500

Quality Control

Testing:



12.5% SDS-PAGE Stained with Coomassie Blue.

 Tel: 1-631-559-9269 1-516-512-3133

 Email: info@creative-biomart.com  Fax: 1-631-938-8127

 45-1 Ramsey Road, Shirley, NY 11967, USA