

Recombinant Human CLDN18 protein, His-tagged

Cat. No. CLDN18-856H Lot. No. (See product label)

SPECIFICATION

Product Overview	Human Claudin 18.2 is expressed from E.coli with a 6-His tag at the C-terminal. It contains Met27-Arg80 & Val136-Ala 184.
Species	Human
Source	E.coli
ProteinLength	Met27-Arg80 & Val136-Ala 184
Description	Claudin18(CLDN18) belongs to the large claudin family of proteins, which form tight junction strands in epithelial cells. CLDN18 is specifically expressed in the stomach and lung. CLDN18 has two alternatively spliced variants,CLDN18.1 and CLDN18.2. Isoform 2 (Claudin 18.2) is abundant in gastric tumors.
Form	Supplied as 0.22um filtered solution in 10mM Na ₂ CO ₃ -NaHCO ₃ and 5% glycerol (pH 10.0).
Molecular Mass	The protein has a predicted MW of 31.6 kDa same as Bis-Tris PAGE result.
Endotoxin	Less than 1EU per ug by the LAL method.
Purity	> 95% as determined by Bis-Tris PAGE
Storage	The product should be stored at -70°C. Please do not repeated freeze-thaw cycles.

 Tel: 1-631-559-9269 1-516-512-3133

 Email: info@creative-biomart.com  Fax: 1-631-938-8127

 45-1 Ramsey Road, Shirley, NY 11967, USA

GENE INFORMATION

Gene Name CLDN18 claudin 18 [Homo sapiens (human)]

Official Symbol CLDN18

Synonyms CLDN18, CLDN18.2, Claudin-18.2

Gene ID 51208

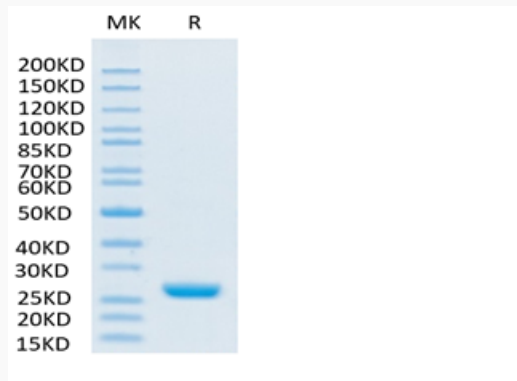
mRNA Refseq NM_001002026.3

Protein Refseq NP_001002026.1

MIM 609210

UniProt ID P56856

**Tris-Bis PAGE of
CLDN18-856H**



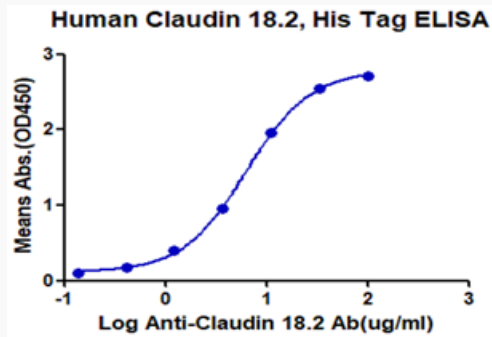
 Tel: 1-631-559-9269 1-516-512-3133

 Email: info@creative-biomart.com  Fax: 1-631-938-8127

 45-1 Ramsey Road, Shirley, NY 11967, USA



ELISA data of
CLDN18-856H



Tel: 1-631-559-9269 1-516-512-3133

Email: info@creative-biomart.com Fax: 1-631-938-8127

45-1 Ramsey Road, Shirley, NY 11967, USA