

Active Recombinant Human CLDN18 protein

Cat. No. CLDN18-857H Lot. No. (See product label)

SPECIFICATION

Product Overview	Full length Human Claudin 18.2(P56856-2)(Met1-Val261) is expressed from HEK293 with no Tag. It contains Met1-Val261.
Species	Human
Source	HEK293
ProteinLength	Met1-Val261
Description	Claudin18(CLDN18) belongs to the large claudin family of proteins, which form tight junction strands in epithelial cells. CLDN18 is specifically expressed in the stomach and lung. CLDN18 has two alternatively spliced variants, CLDN18.1 and CLDN18.2. Isoform 2 (Claudin 18.2) is abundant in gastric tumors.
Form	Supplied as 0.22um filtered solution in PBS(pH 7.4).
Bio-activity	Immobilized Human Claudin18.2. Dose response curve for Anti-Claudin18.2 Antibody, hFc Tag with the EC50 of 0.12µg/ml determined by ELISA.
Molecular Mass	The Protein has a predicted MW of 29kDa same as Bis-Tris PAGE result.
Endotoxin	Less than 1 EU per ug by the LAL method.
Purity	>95% as determined by HPLC

 Tel: 1-631-559-9269 1-516-512-3133

 Email: info@creative-biomart.com  Fax: 1-631-938-8127

 45-1 Ramsey Road, Shirley, NY 11967, USA

Storage The product should be stored at -20°C or -70°C. Please do not repeated freeze-thaw cycles.

Reconstitution It is recommended that sterile water be added to the vial to prepare a stock solution of 0.2 ug/ul. Centrifuge the vial at 4°C before opening to recover the entire contents.

GENE INFORMATION

Gene Name CLDN18 claudin 18 [Homo sapiens (human)]

Official Symbol CLDN18

Synonyms SFTA5; SFTPJ

Gene ID 51208

mRNA Refseq NM_001002026.3

Protein Refseq NP_001002026

MIM 609210

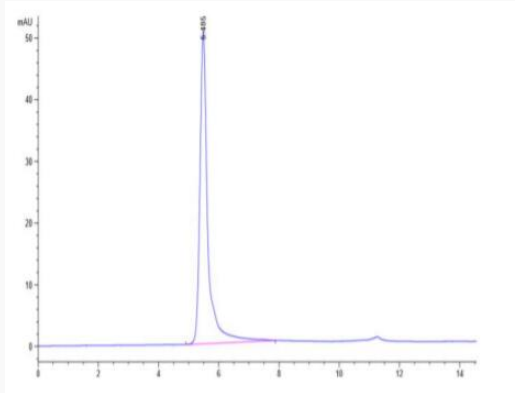
UniProt ID P56856

 Tel: 1-631-559-9269 1-516-512-3133

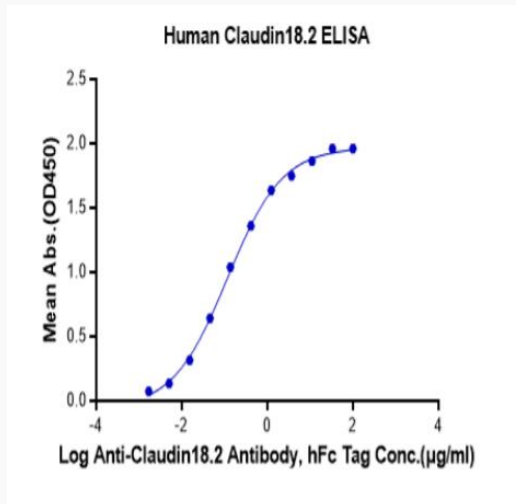
 Email: info@creative-biomart.com  Fax: 1-631-938-8127

 45-1 Ramsey Road, Shirley, NY 11967, USA

HPLC



ELISA



 Tel: 1-631-559-9269 1-516-512-3133

 Email: info@creative-biomart.com  Fax: 1-631-938-8127

 45-1 Ramsey Road, Shirley, NY 11967, USA