

Recombinant Human CLDN19 Protein, Myc/DDK-tagged, C13 and N15-labeled

Cat. No. CLDN19-2623H **Lot. No.** (See product label)

SPECIFICATION

Product Overview	CLDN19 MS Standard C13 and N15-labeled recombinant protein (NP_001116867) with a C-terminal MYC/DDK tag, was expressed in HEK293 cells.
Species	Human
Source	HEK293
Description	The product of this gene belongs to the claudin family. It plays a major role in tight junction-specific obliteration of the intercellular space, through calcium-independent cell-adhesion activity. Defects in this gene are the cause of hypomagnesemia renal with ocular involvement (HOMGO). HOMGO is a progressive renal disease characterized by primary renal magnesium wasting with hypomagnesemia, hypercalciuria and nephrocalcinosis associated with severe ocular abnormalities such as bilateral chorioretinal scars, macular colobomata, significant myopia and nystagmus. Alternatively spliced transcript variants encoding distinct isoforms have been identified for this gene.
Molecular Mass	21.9 kDa
AA Sequence	MANSGLQLLGYFLALGGWVGIIASTALPQWKQSSYAGDAITAVGLYEGLWMSCAS QSTGQVQCKLYDSSLALDGHISARALMVVAVLLGFVAMVLSVVGKCTRVDGSDNP IAKGRVAIAGGALFILAGLCTLTAVSWYATLVTQEFFNPSTPVNARYEFGPALFVGWA SAGLAVLGGSFLLCCTCPEPERPNSSPQPYRPGPSAAAREYVTRTRPLEQKLISEEDL

 Tel: 1-631-559-9269 1-516-512-3133

 Email: info@creative-biomart.com  Fax: 1-631-938-8127

 45-1 Ramsey Road, Shirley, NY 11967, USA

AANDILDYKDDDDKV

Purity > 80% as determined by SDS-PAGE and Coomassie blue staining

Stability Stable for 3 months from receipt of products under proper storage and handling conditions.

Storage Store at -80 centigrade. Avoid repeated freeze-thaw cycles.

Concentration 50 µg/mL as determined by BCA

Storage Buffer 100 mM glycine, 25 mM Tris-HCl, pH 7.3.

GENE INFORMATION

Gene Name [CLDN19 claudin 19 \[Homo sapiens \(human\) \]](#)

Official Symbol [CLDN19](#)

Synonyms CLDN19; claudin 19; HOMG5; claudin-19

Gene ID [149461](#)

mRNA Refseq [NM_001123395](#)

Protein Refseq [NP_001116867](#)

MIM [610036](#)

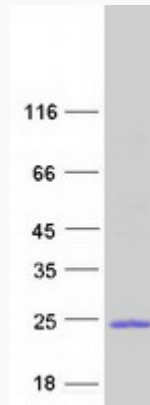
UniProt ID [Q8N6F1](#)

 Tel: 1-631-559-9269 1-516-512-3133

 Email: info@creative-biomart.com  Fax: 1-631-938-8127

 45-1 Ramsey Road, Shirley, NY 11967, USA

SDS-PAGE



 Tel: 1-631-559-9269 1-516-512-3133

 Email: info@creative-biomart.com  Fax: 1-631-938-8127

 45-1 Ramsey Road, Shirley, NY 11967, USA