

# Recombinant Full Length Human claudin 2 Protein, Flag tagged

Cat. No. CLDN2-06HFL Lot. No. (See product label)

## SPECIFICATION

<b>Product Overview</b>	Recombinant protein of human claudin 2 (CLDN2) protein (1-230aa) with C-Flag tag was expressed in HEK293T.
<b>Species</b>	Human
<b>Source</b>	HEK293
<b>ProteinLength</b>	1-230aa
<b>Description</b>	This gene product belongs to the claudin protein family whose members have been identified as major integral membrane proteins localized exclusively at tight junctions. Claudins are expressed in an organ-specific manner and regulate tissue-specific physiologic properties of tight junctions. This protein is expressed in the intestine. Alternatively spliced transcript variants with different 5' untranslated region have been found for this gene.
<b>Tag</b>	C-Flag
<b>Molecular Mass</b>	24.4 kDa
<b>AA Sequence</b>	MASLGLQLVGYILGLLGLLGTLVAMLLPSWKTSSYVGASIVTAVGFSKGLWMECATH STGITQCIDIYSTLLGLPADIQAAQAMMVTSSAISSLACIISVVGMRCTVFCQESRAKD RVAVAGGVFFILGLLGFIPVAWNLHGILRDFYSPLVPDSMKFEIGEALYLGIISSLFSL IAGIILCFSCSSQRNRSNYDAYQAQPLATRSSPRPGQPPKVKSEFNYSYSLTGYVTR

 Tel: 1-631-559-9269 1-516-512-3133

 Email: [info@creative-biomart.com](mailto:info@creative-biomart.com)  Fax: 1-631-938-8127

 45-1 Ramsey Road, Shirley, NY 11967, USA

TRPLEQKLISEEDLAANDILDYKDDDDKV

**Purity** > 80% as determined by SDS-PAGE and Coomassie blue staining

**Notes** For testing in cell culture applications, please filter before use. Note that you may experience some loss of protein during the filtration process.

**Stability** Stable for 12 months from the date of receipt of the product under proper storage and handling conditions. Avoid repeated freeze-thaw cycles.

**Storage** Store at -80 centigrade.

**Storage Buffer** 25 mM Tris-HCl, 100 mM glycine, pH 7.3, 10% glycerol

**Concentration** > 0.05 µg/µL as determined by microplate BCA method

## GENE INFORMATION

**Gene Name** [CLDN2 claudin 2 \[ Homo sapiens \(human\) \]](#)

**Official Symbol** [CLDN2](#)

**Synonyms** CLDN2; claudin 2; claudin-2; SP82; OAZON

**Gene ID** [9075](#)

**mRNA Refseq** [NM\\_020384](#)

**Protein Refseq** [NP\\_065117](#)

**MIM** [300520](#)

 Tel: 1-631-559-9269 1-516-512-3133

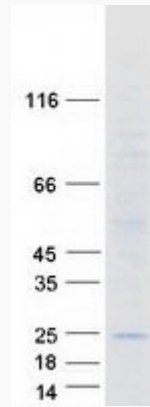
 Email: [info@creative-biomart.com](mailto:info@creative-biomart.com)  Fax: 1-631-938-8127

 45-1 Ramsey Road, Shirley, NY 11967, USA

UniProt ID

P57739

SDS-PAGE



 Tel: 1-631-559-9269 1-516-512-3133

 Email: [info@creative-biomart.com](mailto:info@creative-biomart.com)  Fax: 1-631-938-8127

 45-1 Ramsey Road, Shirley, NY 11967, USA