

## Recombinant Human CLDN2 Protein, GST-tagged

Cat. No. CLDN2-1438H Lot. No. (See product label)

### SPECIFICATION

<b>Product Overview</b>	Human CLDN2 full-length ORF ( NP_065117.1, 1 a.a. - 230 a.a.) recombinant protein with GST-tag at N-terminal.
<b>Species</b>	Human
<b>Source</b>	Wheat Germ
<b>Description</b>	This gene product belongs to the claudin protein family whose members have been identified as major integral membrane proteins localized exclusively at tight junctions. Claudins are expressed in an organ-specific manner and regulate tissue-specific physiologic properties of tight junctions. This protein is expressed in the intestine. Alternatively spliced transcript variants with different 5' untranslated region have been found for this gene.[provided by RefSeq, Jan 2010]
<b>Molecular Mass</b>	50.9 kDa
<b>AA Sequence</b>	MASLGLQLVGYILGLLGLLGTLVAMLLPSWKTSSYVGASIVTAVGFSKGLWMECATH STGITQCDIYSTLLGLPADIQAAQAMMVTSSAISSLACIISVVGMRCTVFCQESRAKD RVAVAGGVFFILGLLGFIPVAWNLHGILRDFYSPLVPDSMKFEIGEALYLGIISSLFSL IAGIILCFSCSSQRNRSNYDAYQAQPLATRSSPRPGQPPKVKSEFNYSYSLTGYV
<b>Applications</b>	Enzyme-linked Immunoabsorbent Assay Western Blot (Recombinant protein) Antibody Production Protein Array

 Tel: 1-631-559-9269 1-516-512-3133

 Email: [info@creative-biomart.com](mailto:info@creative-biomart.com)  Fax: 1-631-938-8127

 45-1 Ramsey Road, Shirley, NY 11967, USA

<b>Notes</b>	Best use within three months from the date of receipt of this protein.
<b>Storage</b>	Store at -80 centigrade. Aliquot to avoid repeated freezing and thawing.
<b>Storage Buffer</b>	50 mM Tris-HCl, 10 mM reduced Glutathione, pH=8.0 in the elution buffer.

## GENE INFORMATION

<b>Gene Name</b>	CLDN2 claudin 2 [ Homo sapiens ]
<b>Official Symbol</b>	CLDN2
<b>Synonyms</b>	CLDN2; claudin 2; claudin-2; SP82;
<b>Gene ID</b>	9075
<b>mRNA Refseq</b>	NM_001171092
<b>Protein Refseq</b>	NP_001164563
<b>MIM</b>	300520
<b>UniProt ID</b>	P57739

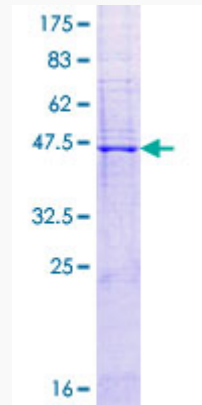
 Tel: 1-631-559-9269 1-516-512-3133

 Email: [info@creative-biomart.com](mailto:info@creative-biomart.com)  Fax: 1-631-938-8127

 45-1 Ramsey Road, Shirley, NY 11967, USA

**Quality Control**

**Testing:**



12.5% SDS-PAGE Stained with Coomassie Blue.

 Tel: 1-631-559-9269 1-516-512-3133

 Email: [info@creative-biomart.com](mailto:info@creative-biomart.com)  Fax: 1-631-938-8127

 45-1 Ramsey Road, Shirley, NY 11967, USA