

Recombinant Full Length Human CLDN22 Protein, C-Flag-tagged

Cat. No. CLDN22-159HFL **Lot. No.** (See product label)

SPECIFICATION

Product Overview	Recombinant Full Length Human CLDN22 Protein, fused to Flag-tag at C-terminus, was expressed in Mammalian cells.
Species	Human
Source	Mammalian Cells
Description	This gene encodes a member of the claudin family. Claudins are integral membrane proteins and components of tight junction strands. Tight junction strands serve as a physical barrier to prevent solutes and water from passing freely through the paracellular space between epithelial or endothelial cell sheets, and also play critical roles in maintaining cell polarity and signal transductions. This gene is intronless and overlaps the 3' UTR of the WWC2 gene (GeneID: 80014) on the opposite strand.
Form	25 mM Tris HCl, pH 7.3, 100 mM glycine, 10% glycerol.
Molecular Mass	24.3 kDa
AA Sequence	MALVFRTVAQLAGVLSLLGWVLSCLTNYLPHWKLNLDLNEMENWTMGLWQTCV IQEEVGMQCKDFDSF LALPAELRVSRILMFLSNGLGFLGLLVSGFGLDCLRIGESQR DLKRRLILGGILSWASGVTALVPVSWV AHKTVQEFWDENVPDFVPRWEFGALFL GWFAGLSLLLGGCLLHCAACSSHAPLASGHYAVAQTQDDHHQE LETRNTNLKHTRTRPLEQKLISEEDLAANDILDYKDDDDKV

 Tel: 1-631-559-9269 1-516-512-3133

 Email: info@creative-biomart.com  Fax: 1-631-938-8127

 45-1 Ramsey Road, Shirley, NY 11967, USA

Purity	> 80% as determined by SDS-PAGE and Coomassie blue staining.
Stability	Stable for 12 months from the date of receipt of the product under proper storage and handling conditions. Avoid repeated freeze-thaw cycles.
Storage	Store at -80 centigrade.
Concentration	>50 ug/mL as determined by microplate BCA method.
Preparation	Recombinant protein was captured through anti-DDK affinity column followed by conventional chromatography steps.
Protein Families	Transmembrane
Protein Pathways	Cell adhesion molecules (CAMs), Leukocyte transendothelial migration, Tight junction
Full Length	Full L.

GENE INFORMATION

Gene Name	CLDN22 claudin 22 [Homo sapiens (human)]
Official Symbol	CLDN22
Synonyms	CLDN21
Gene ID	53842
mRNA Refseq	NM_001111319.3
Protein Refseq	NP_001104789.1

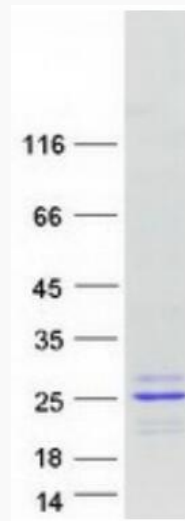
 Tel: 1-631-559-9269 1-516-512-3133

 Email: info@creative-biomart.com  Fax: 1-631-938-8127

 45-1 Ramsey Road, Shirley, NY 11967, USA

UniProt ID

Q8N7P3



Coomassie blue staining of purified CLDN22 protein.

 Tel: 1-631-559-9269 1-516-512-3133

 Email: info@creative-biomart.com  Fax: 1-631-938-8127

 45-1 Ramsey Road, Shirley, NY 11967, USA