

## Active Recombinant Human CLDN3 Full Length Transmembrane protein(Nanodisc)

Cat. No. CLDN3-0298H Lot. No. (See product label)

### SPECIFICATION

<b>Product Overview</b>	Recombinant Human CLDN3 Full Length Transmembrane protein(O15551), was expressed in HEK293.
<b>Species</b>	Human
<b>Source</b>	HEK293
<b>Form</b>	Lyophilized from nanodisc solubilization buffer (20 mM Tris-HCl, 150 mM NaCl, pH 8.0). Normally 5% – 8% trehalose is added as protectants before lyophilization. Please see Certificate of Analysis for specific instructions.
<b>Bio-activity</b>	Elisa plates were pre-coated with Flag Tag CLDN3-Nanodisc (0.2µg/per well). Serial diluted anti-Flag monoclonal antibody solutions were added, washed, and incubated with secondary antibody before Elisa reading. From above data, the EC50 for anti-Flag monoclonal antibody binding with CLDN3-Nanodisc is 6.725ng/ml.
<b>Molecular Mass</b>	The human full length CLDN3 protein has a MW of 23.3 kDa.
<b>Storage</b>	Store at -20°C to -80°C for 12 months in lyophilized form. After reconstitution, if not intended for use within a month, aliquot and store at -80°C (Avoid repeated freezing and thawing). Lyophilized proteins are shipped at ambient temperature.
<b>Reconstitution</b>	It is recommended that sterile water be added to the vial to prepare a stock solution of 0.2 ug/ul. Centrifuge the vial at 4°C before opening to recover the entire contents.

 Tel: 1-631-559-9269 1-516-512-3133

 Email: [info@creative-biomart.com](mailto:info@creative-biomart.com)  Fax: 1-631-938-8127

 45-1 Ramsey Road, Shirley, NY 11967, USA

**Full Length** Full L.

## GENE INFORMATION

**Gene Name** [CLDN3 claudin 3 \[ Homo sapiens \]](#)

**Official Symbol** [CLDN3](#)

**Synonyms** CLDN3; claudin 3; C7orf1, CPETR2; claudin-3; Clostridium perfringens enterotoxin receptor 2; CPE R2; CPE receptor 2; HRVP1; RVP1; ventral prostate.1 like protein; CPE-R 2; CPE-receptor 2; ventral prostate.1-like protein; ventral prostate.1 protein homolog; C7orf1; CPE-R2; CPETR2;

**Gene ID** [1365](#)

**mRNA Refseq** [NM\\_001306](#)

**Protein Refseq** [NP\\_001297](#)

**MIM** [602910](#)

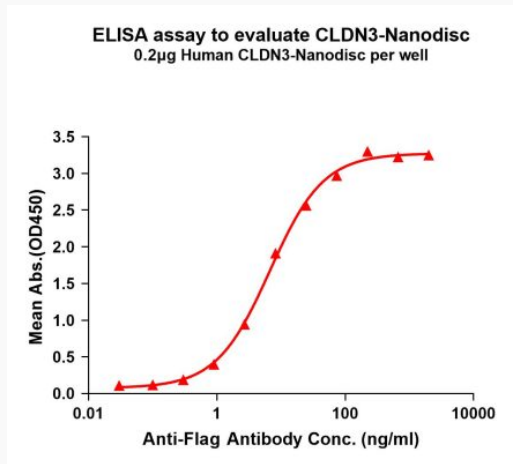
**UniProt ID** [O15551](#)

 Tel: 1-631-559-9269 1-516-512-3133

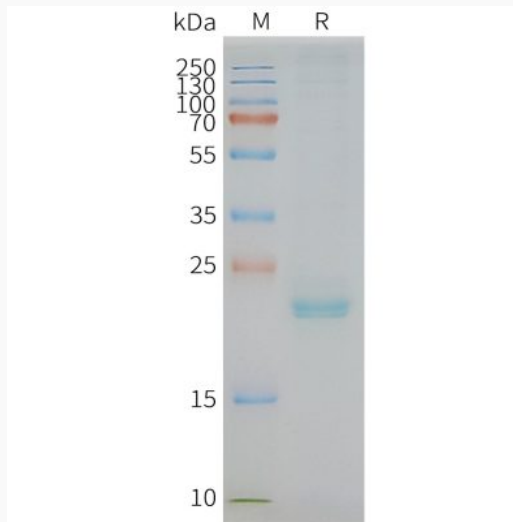
 Email: [info@creative-biomart.com](mailto:info@creative-biomart.com)  Fax: 1-631-938-8127

 45-1 Ramsey Road, Shirley, NY 11967, USA

**Activity**



**SDS-PAGE**



 Tel: 1-631-559-9269 1-516-512-3133

 Email: [info@creative-biomart.com](mailto:info@creative-biomart.com)  Fax: 1-631-938-8127

 45-1 Ramsey Road, Shirley, NY 11967, USA