

Active Recombinant Full Length Human Claudin 3 Nanoparticles

Cat. No. CLDN3-07HFL Lot. No. (See product label)

SPECIFICATION

Species	Human
Source	HEK293T
ProteinLength	1-220 aa
Description	<p>Claudin 3, also known as CLDN3, is an integral membrane protein with 4 transmembrane domains, two extracellular loops, two intracellular loops, both N-terminus and C-terminus ends towards the cytosol. Human Claudin 3 is a member of Claudin protein family, involved with tight junction and cell-to-cell adhesion. Claudin 3 is expressed on intestinal epithelia cells, and associated with Williams-Beuren Syndrome and Cholesteatoma.</p>
Applications	ELISA for Claudin 3 specific antibody binding assays; animal immunization, RUO
Storage	Store at -80 centigrade.
Storage Buffer	0.2 µm filtered PBS, pH 7.4
Shipping	Frozen Dry Ice

GENE INFORMATION

Gene Name	CLDN3 claudin 3 [Homo sapiens (human)]
------------------	--

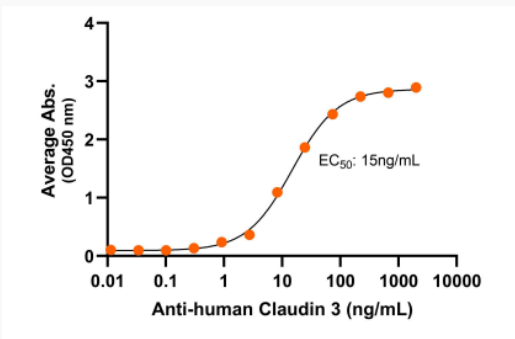
 Tel: 1-631-559-9269 1-516-512-3133

 Email: info@creative-biomart.com  Fax: 1-631-938-8127

 45-1 Ramsey Road, Shirley, NY 11967, USA

Official Symbol	CLDN3
Synonyms	CLDN3; claudin 3; C7orf1, CPETR2; claudin-3; Clostridium perfringens enterotoxin receptor 2; CPE R2; CPE receptor 2; HRVP1; RVP1; ventral prostate.1 like protein; CPE-R 2; CPE-receptor 2; ventral prostate.1-like protein; ventral prostate.1 protein homolog; C7orf1; CPE-R2; CPETR2
Gene ID	1365
mRNA Refseq	NM_001306
Protein Refseq	NP_001297
MIM	602910
UniProt ID	P15551

Bioactivity-Antibody Binding



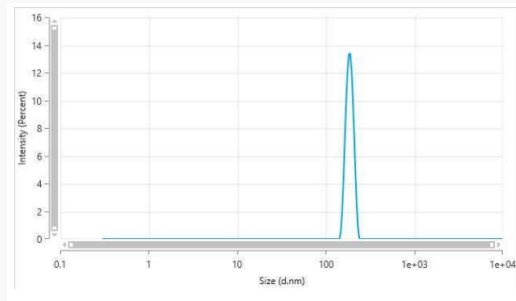
Immobilized human Claudin 3 VLP at 5 µg/mL (100 µL/well) can bind monoclonal anti-human Claudin 3 antibody with a half maximal effective concentration (EC50) range of 9.2-36.7 ng/mL (QC tested).

Tel: 1-631-559-9269 1-516-512-3133

Email: info@creative-biomart.com Fax: 1-631-938-8127

45-1 Ramsey Road, Shirley, NY 11967, USA

Dynamic Light Scattering



The mean peak diameter (nm) of the CMP is 186.5 with a range of 169.4-200.3 with more than 95% intensity as determined by dynamic light scattering (DLS).

 Tel: 1-631-559-9269 1-516-512-3133

 Email: info@creative-biomart.com  Fax: 1-631-938-8127

 45-1 Ramsey Road, Shirley, NY 11967, USA