

# Active Recombinant Human CLDN3 Full Length Transmembrane protein, His-tagged(VLPs)

Cat. No. CLDN3-10H Lot. No. (See product label)

## SPECIFICATION

<b>Product Overview</b>	Recombinant Human CLDN3 Full Length protein(O15551)(1-220aa)(VLPs), fused with His tag, was expressed in HEK293.
<b>Species</b>	Human
<b>Source</b>	HEK293
<b>ProteinLength</b>	1-220aa
<b>Form</b>	Lyophilized from a 0.2 µm filtered PBS, 6% Trehalose, pH 7.4
<b>Bio-activity</b>	Measured by its binding ability in a functional ELISA. Immobilized Human CLDN3 at 10 µg/mL can bind Anti-CLDN3 recombinant antibody, the EC50 is 23.62-34.37 ng/mL.VLPs is negative control.
<b>Molecular Mass</b>	24.7 kDa
<b>AA Sequence</b>	MSMGLEITGTALAVLGWLGTVCCALPMWRVSAFIGSNIITSQNIWEGGLWMNCVVQS TGQMQCKVYDSSLALPQDLQAARALIVVAILLAFFGLLVALVGAQCTNCVQDDTAKA KITIVAGVLFLLAALLTLVPVSW SANTIIRDFYNPVPVPEAQKREMGAGLYVGWAAAAL QLLGGALLCCSCPPREKKYTATKVVYSAPRSTGPGASLGTGYDRKDYY
<b>Endotoxin</b>	Less than 1.0 EU/ug as determined by LAL method.

 Tel: 1-631-559-9269 1-516-512-3133

 Email: [info@creative-biomart.com](mailto:info@creative-biomart.com)  Fax: 1-631-938-8127

 45-1 Ramsey Road, Shirley, NY 11967, USA

**Storage** Store at -20°C/-80°C upon receipt, aliquoting is necessary for mutiple use. Avoid repeated freeze-thaw cycles.

**Reconstitution** Please reconstitute protein in deionized sterile water to a concentration of 0.1-1.0 mg/mL. We recommend to add 5-50% of glycerol (final concentration) and aliquot for long-term storage at -20°C/-80°C. Our default final concentration of glycerol is 50%.

## GENE INFORMATION

**Gene Name** CLDN3 claudin 3 [ Homo sapiens ]

**Official Symbol** CLDN3

**Synonyms** CLDN3; claudin 3; C7orf1, CPETR2; claudin-3; Clostridium perfringens enterotoxin receptor 2; CPE R2; CPE receptor 2; HRVP1; RVP1; ventral prostate.1 like protein; CPE-R 2; CPE-receptor 2; ventral prostate.1-like protein; ventral prostate.1 protein homolog; C7orf1; CPE-R2; CPETR2;

**Gene ID** 1365

**mRNA Refseq** NM\_001306

**Protein Refseq** NP\_001297

**MIM** 602910

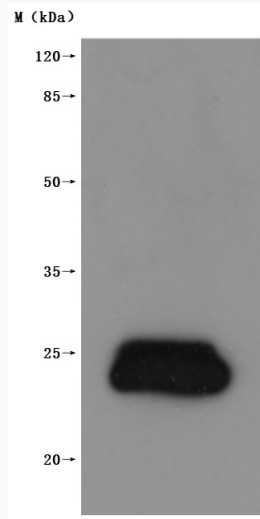
**UniProt ID** O15551

 Tel: 1-631-559-9269 1-516-512-3133

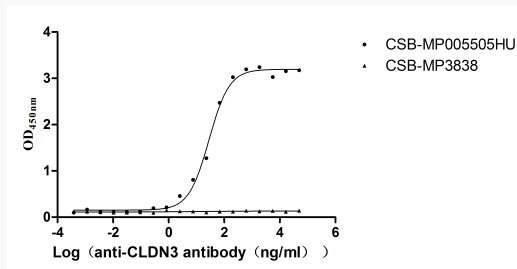
 Email: [info@creative-biomart.com](mailto:info@creative-biomart.com)  Fax: 1-631-938-8127

 45-1 Ramsey Road, Shirley, NY 11967, USA

**SDS-PAGE**



**Activity**



 Tel: 1-631-559-9269 1-516-512-3133

 Email: [info@creative-biomart.com](mailto:info@creative-biomart.com)  Fax: 1-631-938-8127

 45-1 Ramsey Road, Shirley, NY 11967, USA