

Recombinant Human CLDN3 protein, His-tagged

Cat. No. CLDN3-11293H Lot. No. (See product label)

SPECIFICATION

Product Overview	Recombinant Human CLDN3 protein(NP_001297)(Arg30~Arg80), fused to His tag, was expressed in E. coli.
Species	Human
Source	E.coli
ProteinLength	Arg30~Arg80
Form	20mM Tris, 150mM NaCl, pH8.0, containing 0.01% SKL, 5% Trehalose.
Molecular Mass	11kDa as determined by SDS-PAGE reducing conditions.
Endotoxin	<1.0EU per 1g (determined by the LAL method)
Purity	> 90%
Applications	Positive Control; Immunogen; SDS-PAGE; WB.
Storage	Avoid repeated freeze/thaw cycles. Store at 2-8°C for one month. Aliquot and store at -80°C for 12 months.
Reconstitution	Reconstitute in ddH ₂ O to a concentration of 0.1-1.0 mg/mL. Do not vortex.

 Tel: 1-631-559-9269 1-516-512-3133

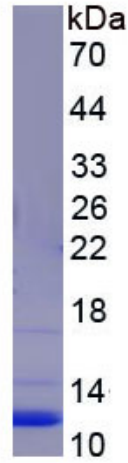
 Email: info@creative-biomart.com  Fax: 1-631-938-8127

 45-1 Ramsey Road, Shirley, NY 11967, USA

GENE INFORMATION**Gene Name** [CLDN3 claudin 3 \[Homo sapiens \]](#)**Official Symbol** [CLDN3](#)**Synonyms** [CLDN3](#); [claudin 3](#); [C7orf1](#), [CPETR2](#); [claudin-3](#); [Clostridium perfringens enterotoxin receptor 2](#); [CPE R2](#); [CPE receptor 2](#); [HRVP1](#); [RVP1](#); [ventral prostate.1 like protein](#); [CPE-R 2](#); [CPE-receptor 2](#); [ventral prostate.1-like protein](#); [ventral prostate.1 protein homolog](#); [C7orf1](#); [CPE-R2](#); [CPETR2](#);**Gene ID** [1365](#)**mRNA Refseq** [NM_001306.3](#)**Protein Refseq** [NP_001297.1](#)**MIM** [602910](#)**UniProt ID** [O15551](#) Tel: 1-631-559-9269 1-516-512-3133 Email: info@creative-biomart.com  Fax: 1-631-938-8127 45-1 Ramsey Road, Shirley, NY 11967, USA



SDS-PAGE



Tel: 1-631-559-9269 1-516-512-3133

Email: info@creative-biomart.com Fax: 1-631-938-8127

45-1 Ramsey Road, Shirley, NY 11967, USA