

# Recombinant Full Length Human CLDN3 Protein, Flag tagged

Cat. No. CLDN3-1442H Lot. No. (See product label)

## SPECIFICATION

<b>Product Overview</b>	Purified recombinant protein of Human claudin 3 (CLDN3), full length, with C-terminal Flag tag, expressed in HEK293T cells.
<b>Species</b>	Human
<b>Source</b>	HEK293T
<b>ProteinLength</b>	1-220 aa
<b>Description</b>	Tight junctions represent one mode of cell-to-cell adhesion in epithelial or endothelial cell sheets, forming continuous seals around cells and serving as a physical barrier to prevent solutes and water from passing freely through the paracellular space. These junctions are comprised of sets of continuous networking strands in the outwardly facing cytoplasmic leaflet, with complementary grooves in the inwardly facing extracytoplasmic leaflet. The protein encoded by this intronless gene, a member of the claudin family, is an integral membrane protein and a component of tight junction strands. It is also a low-affinity receptor for Clostridium perfringens enterotoxin, and shares aa sequence similarity with a putative apoptosis-related protein found in rat.
<b>Molecular Mass</b>	23.3 kDa
<b>AASequence</b>	MSMGLEITGTALAVLGWLGTVCCALPMWRVSAFIGSNIITSQNIWEGGLWMNCVVQS TGQMQCKVYDSSLALPQDLQAARALIVVAILLAFAFGLLVALVGAQCTNVCVQDDTAKA KITIVAGVLFLLAALLTLVPVSW SANTIIRDFYNPVVPEAQKREMGAGLYVGWAAAAL QLLGGALLCCSCPPREKKYTATKVVYSAPRSTGPGASLGTGYDRKDYVTRTRPLEQ

 Tel: 1-631-559-9269 1-516-512-3133

 Email: [info@creative-biomart.com](mailto:info@creative-biomart.com)  Fax: 1-631-938-8127

 45-1 Ramsey Road, Shirley, NY 11967, USA

KLISEEDLAANDILDYKDDDDKV

**Purity** > 80% as determined by SDS-PAGE and Coomassie blue staining

**Stability** Stable for at least 1 year from receipt of products under proper storage and handling conditions. Avoid repeated freeze-thaw cycles.

**Storage** Store at -80 centigrade after receiving vials.

**Storage Buffer** 25mM Tris-HCl, pH7.3, 100mM glycine, 10% glycerol

**Concentration** > 50 µg/mL as determined by microplate Bradford method

## GENE INFORMATION

**Gene Name** [CLDN3 claudin 3 \[ Homo sapiens \(human\) \]](#)

**Official Symbol** [CLDN3](#)

**Synonyms** CLDN3; claudin 3; C7orf1, CPETR2; claudin-3; Clostridium perfringens enterotoxin receptor 2; CPE R2; CPE receptor 2; HRVP1; RVP1; ventral prostate.1 like protein; CPE-R 2; CPE-receptor 2; ventral prostate.1-like protein; ventral prostate.1 protein homolog; C7orf1; CPE-R2; CPETR2;

**Gene ID** [1365](#)

**mRNA Refseq** [NM\\_001306](#)

**Protein Refseq** [NP\\_001297](#)

**MIM** [602910](#)

 Tel: 1-631-559-9269 1-516-512-3133

 Email: [info@creative-biomart.com](mailto:info@creative-biomart.com)  Fax: 1-631-938-8127

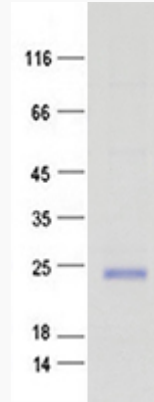
 45-1 Ramsey Road, Shirley, NY 11967, USA



UniProt ID

O15551

SDS-PAGE



Tel: 1-631-559-9269 1-516-512-3133

Email: [info@creative-biomart.com](mailto:info@creative-biomart.com) Fax: 1-631-938-8127

45-1 Ramsey Road, Shirley, NY 11967, USA