

# Recombinant Human CLDN3 Full Length Transmembrane protein, His-tagged

Cat. No. CLDN3-1537H Lot. No. (See product label)

## SPECIFICATION

<b>Product Overview</b>	Recombinant Human CLDN3 protein(O15551)(1-220aa), fused to N-terminal His tag, was expressed in E. coli.
<b>Species</b>	Human
<b>Source</b>	E.coli
<b>ProteinLength</b>	1-220aa
<b>Form</b>	If the delivery form is liquid, the default storage buffer is Tris/PBS-based buffer, 5%-50% glycerol. If the delivery form is lyophilized powder, the buffer before lyophilization is Tris/PBS-based buffer, 6% Trehalose, pH 8.0.
<b>Molecular Mass</b>	26.1 kDa
<b>AA Sequence</b>	MSMGLEITGTALAVLGWLGTIVCCALPMWRVSAFIGSNIITSQNIWEGGLWMNCVVQS TGQMQCKVYDSSLALPQDLQAARALIVVAILLAAFGLLVALVGAQCTNVCVQDDTAKA KITIVAGVLFLLAALLTLVPVSW SANTIIRDFYNPVVPEAQKREMGAGLYVGWAAAAL QLLGGALLCCSCPPREKKYTATKVVYSAPRSTGPGASLGTGYDRKDYV
<b>Purity</b>	Greater than 85% as determined by SDS-PAGE.
<b>Storage</b>	Store at -20°C/-80°C upon receipt, aliquoting is necessary for mutiple use. Avoid

 Tel: 1-631-559-9269 1-516-512-3133

 Email: [info@creative-biomart.com](mailto:info@creative-biomart.com)  Fax: 1-631-938-8127

 45-1 Ramsey Road, Shirley, NY 11967, USA

repeated freeze-thaw cycles.

**Reconstitution**

Please reconstitute protein in deionized sterile water to a concentration of 0.1-1.0 mg/mL. We recommend to add 5-50% of glycerol (final concentration) and aliquot for long-term storage at -20°C/-80°C. Our default final concentration of glycerol is 50%.

## GENE INFORMATION

**Gene Name** [CLDN3 claudin 3 \[ Homo sapiens \]](#)

**Official Symbol** [CLDN3](#)

**Synonyms**

CLDN3; claudin 3; C7orf1, CPETR2; claudin-3; Clostridium perfringens enterotoxin receptor 2; CPE R2; CPE receptor 2; HRVP1; RVP1; ventral prostate.1 like protein; CPE-R 2; CPE-receptor 2; ventral prostate.1-like protein; ventral prostate.1 protein homolog; C7orf1; CPE-R2; CPETR2;

**Gene ID** [1365](#)

**mRNA Refseq** [NM\\_001306](#)

**Protein Refseq** [NP\\_001297](#)

**MIM** [602910](#)

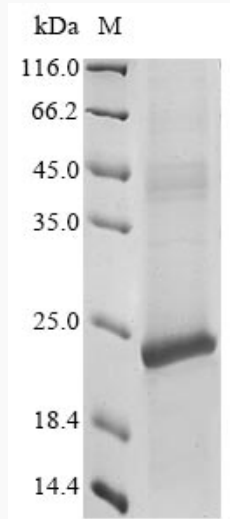
**UniProt ID** [O15551](#)

 Tel: 1-631-559-9269 1-516-512-3133

 Email: [info@creative-biomart.com](mailto:info@creative-biomart.com)  Fax: 1-631-938-8127

 45-1 Ramsey Road, Shirley, NY 11967, USA

**SDS-PAGE**



 Tel: 1-631-559-9269 1-516-512-3133

 Email: [info@creative-biomart.com](mailto:info@creative-biomart.com)  Fax: 1-631-938-8127

 45-1 Ramsey Road, Shirley, NY 11967, USA