

Active Recombinant Full Length Human CLDN3 Protein

Cat. No. CLDN3-29H Lot. No. (See product label)

SPECIFICATION

Product Overview	Claudin 3 protein contains 220 amino acids (Met1-Val220; UniProt# P15551), and is displayed on nanoparticles that mimics the native protein conformation on the cell surface.
Species	Human
Source	HEK293T
ProteinLength	1-220 aa
Description	Claudin 3, also known as CLDN3, is an integral membrane protein with 4 transmembrane domains, two extracellular loops, two intracellular loops, both N-terminus and C-terminus ends towards the cytosol. Human Claudin 3 is a member of Claudin protein family, involved with tight junction and cell-to-cell adhesion. Claudin 3 is expressed on intestinal epithelia cells, and associated with Williams-Beuren Syndrome and Cholesteatoma.
Application	Verified Applications: ELISA for Claudin 3 specific antibody binding assays; animal immunization, RUO.
Storage	Store at -80 centigrade.
Storage Buffer	0.22µm filtered PBS, pH 7.4
Shipping	Frozen Dry Ice

 Tel: 1-631-559-9269 1-516-512-3133

 Email: info@creative-biomart.com  Fax: 1-631-938-8127

 45-1 Ramsey Road, Shirley, NY 11967, USA

GENE INFORMATION

Gene Name CLDN3 claudin 3 [Homo sapiens (human)]

Official Symbol CLDN3

Synonyms CLDN3; claudin 3; C7orf1, CPETR2; claudin-3; Clostridium perfringens enterotoxin receptor 2; CPE R2; CPE receptor 2; HRVP1; RVP1; ventral prostate.1 like protein; CPE-R 2; CPE-receptor 2; ventral prostate.1-like protein; ventral prostate.1 protein homolog; C7orf1; CPE-R2; CPETR2;

Gene ID 1365

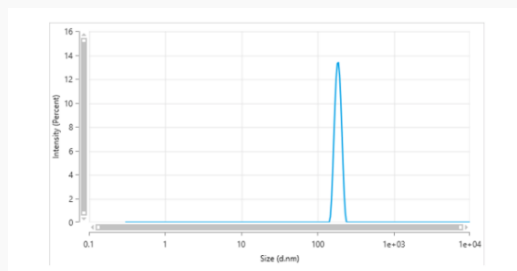
mRNA Refseq NM_001306

Protein Refseq NP_001297

MIM 602910

UniProt ID O15551

Dynamic Light Scattering



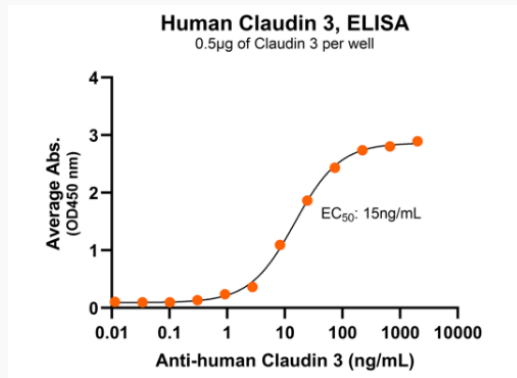
The mean peak diameter (nm) of the CMP is 186.5 with a range of 169.4-200.3 with more than 95% intensity as determined by dynamic light scattering (DLS).

 Tel: 1-631-559-9269 1-516-512-3133

 Email: info@creative-biomart.com  Fax: 1-631-938-8127

 45-1 Ramsey Road, Shirley, NY 11967, USA

Bioactivity-Antibody Binding



Immobilized human Claudin 3 VLP at 5 µg/mL (100 µL/well) can bind monoclonal anti-human Claudin 3 antibody with a half maximal effective concentration (EC50) range of 9.2 – 36.7 ng/mL (QC tested).

Tel: 1-631-559-9269 1-516-512-3133

Email: info@creative-biomart.com Fax: 1-631-938-8127

45-1 Ramsey Road, Shirley, NY 11967, USA