

# Active Recombinant Human CLDN4 Full Length Transmembrane protein(Nanodisc)

Cat. No. CLDN4-0392H Lot. No. (See product label)

## SPECIFICATION

### Product Overview

Recombinant Human CLDN4 Full Length Transmembrane protein(O14493), was expressed in HEK293.

### Species

Human

### Source

HEK293

### Form

Lyophilized from nanodisc solubilization buffer (20 mM Tris-HCl, 150 mM NaCl, pH 8.0). Normally 5% – 8% trehalose is added as protectants before lyophilization. Please see Certificate of Analysis for specific instructions.

### Bio-activity

Elisa plates were pre-coated with Flag Tag CLDN4-Nanodisc (0.2µg/per well). Serial diluted anti-Flag monoclonal antibody solutions were added, washed, and incubated with secondary antibody before Elisa reading. From above data, the EC50 for anti-Flag monoclonal antibody binding with CLDN4-Nanodisc is 4.607ng/ml.

### Molecular Mass

The human full length CLDN4 protein has a MW of 22.1 kDa.

### Storage

Store at -20°C to -80°C for 12 months in lyophilized form. After reconstitution, if not intended for use within a month, aliquot and store at -80°C (Avoid repeated freezing and thawing). Lyophilized proteins are shipped at ambient temperature.

### Reconstitution

It is recommended that sterile water be added to the vial to prepare a stock solution of 0.2 ug/ul. Centrifuge the vial at 4°C before opening to recover the entire contents.

 Tel: 1-631-559-9269 1-516-512-3133

 Email: [info@creative-biomart.com](mailto:info@creative-biomart.com)  Fax: 1-631-938-8127

 45-1 Ramsey Road, Shirley, NY 11967, USA

**Full Length** Full L.

## GENE INFORMATION

**Gene Name** [CLDN4 claudin 4 \[ Homo sapiens \]](#)

**Official Symbol** [CLDN4](#)

**Synonyms** CLDN4; claudin 4; CPETR, CPETR1; claudin-4; Clostridium perfringens enterotoxin receptor 1; CPE R; hCPE R; WBSCR8; Williams Beuren syndrome chromosomal region 8 protein; CPE-receptor; Williams-Beuren syndrome chromosomal region 8 protein; CPER; CPE-R; CPETR; CPETR1; hCPE-R;

**Gene ID** [1364](#)

**mRNA Refseq** [NM\\_001305](#)

**Protein Refseq** [NP\\_001296](#)

**MIM** [602909](#)

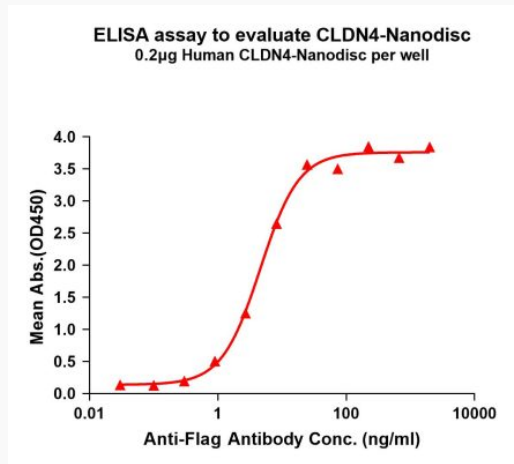
**UniProt ID** [O14493](#)

 Tel: 1-631-559-9269 1-516-512-3133

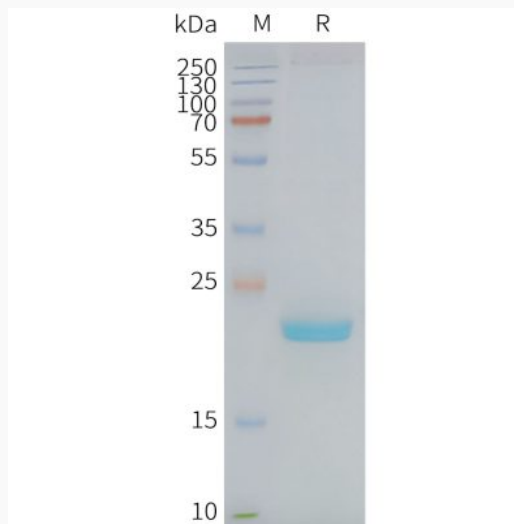
 Email: [info@creative-biomart.com](mailto:info@creative-biomart.com)  Fax: 1-631-938-8127


 45-1 Ramsey Road, Shirley, NY 11967, USA

**Activity**



**SDS-PAGE**



 Tel: 1-631-559-9269 1-516-512-3133

 Email: [info@creative-biomart.com](mailto:info@creative-biomart.com)  Fax: 1-631-938-8127

 45-1 Ramsey Road, Shirley, NY 11967, USA