

Active Recombinant Human CLDN4 Full Length Transmembrane protein, His-tagged(VLPs)

Cat. No. CLDN4-11H Lot. No. (See product label)

SPECIFICATION

Product Overview	Recombinant Human CLDN4 Full Length protein(O14493)(1-209aa)(VLPs), fused with His tag, was expressed in HEK293.
Species	Human
Source	HEK293
ProteinLength	1-209aa
Form	Lyophilized from a 0.2 µm filtered PBS, 6% Trehalose, pH 7.4
Bio-activity	Measured by its binding ability in a functional ELISA. Immobilized Human CLDN4 at 5 µg/mL can bind Anti-CLDN4 recombinant antibody, the EC50 is 29.56-50.75 ng/mL.
Molecular Mass	23.4 kDa
AA Sequence	MASMGLQVMGIALAVLGWLAVMLCCALPMWRVTAFIGSNIVTSQTIWEGLWMNCVV QSTGQMCKVYDSSLALPQDLQAARALVIISIIVAALGVLLSVVGGKCTNCLEDESAK AKTMIVAGVVFLLAGLMVIVPVSHTAHNIIQDFYNPLVASGQKREMGASLYVGWAAS GLLLGGLLCCNCPRTDKPYSKYSAAARSAAASNYV
Endotoxin	Less than 1.0 EU/ug as determined by LAL method.
Storage	Store at -20°C/-80°C upon receipt, aliquoting is necessary for mutiple use. Avoid

 Tel: 1-631-559-9269 1-516-512-3133

 Email: info@creative-biomart.com  Fax: 1-631-938-8127

 45-1 Ramsey Road, Shirley, NY 11967, USA

repeated freeze-thaw cycles.

Reconstitution

Please reconstitute protein in deionized sterile water to a concentration of 0.1-1.0 mg/mL. We recommend to add 5-50% of glycerol (final concentration) and aliquot for long-term storage at -20°C/-80°C. Our default final concentration of glycerol is 50%.

GENE INFORMATION

Gene Name [CLDN4 claudin 4 \[Homo sapiens \]](#)

Official Symbol [CLDN4](#)

Synonyms

CLDN4; claudin 4; CPETR, CPETR1; claudin-4; Clostridium perfringens enterotoxin receptor 1; CPE R; hCPE R; WBSCR8; Williams Beuren syndrome chromosomal region 8 protein; CPE-receptor; Williams-Beuren syndrome chromosomal region 8 protein; CPER; CPE-R; CPETR; CPETR1; hCPE-R;

Gene ID [1364](#)

mRNA Refseq [NM_001305](#)

Protein Refseq [NP_001296](#)

MIM [602909](#)

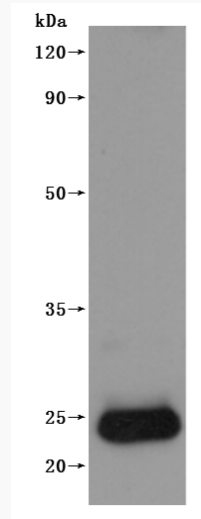
UniProt ID [O14493](#)

 Tel: 1-631-559-9269 1-516-512-3133

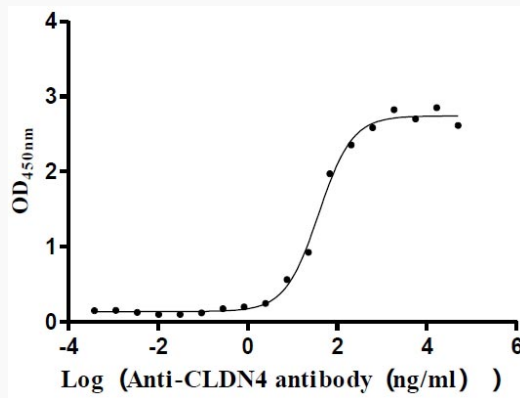
 Email: info@creative-biomart.com  Fax: 1-631-938-8127

 45-1 Ramsey Road, Shirley, NY 11967, USA

SDS-PAGE



Activity



 Tel: 1-631-559-9269 1-516-512-3133

 Email: info@creative-biomart.com  Fax: 1-631-938-8127

 45-1 Ramsey Road, Shirley, NY 11967, USA