

Recombinant Human CLDN4 Protein, Myc/DDK-tagged

Cat. No. CLDN4-150H Lot. No. (See product label)

SPECIFICATION

| | |
|-------------------------|--|
| Product Overview | Recombinant protein of human claudin 4 (CLDN4) with a Myc/DDK tag was expressed in HEK293T. |
| Species | Human |
| Source | HEK293 |
| Description | The protein encoded by this intronless gene belongs to the claudin family. Claudins are integral membrane proteins that are components of the epithelial cell tight junctions, which regulate movement of solutes and ions through the paracellular space. This protein is a high-affinity receptor for Clostridium perfringens enterotoxin (CPE) and may play a role in internal organ development and function during pre- and postnatal life. This gene is deleted in Williams-Beuren syndrome, a neurodevelopmental disorder affecting multiple systems. |
| Molecular Mass | 21.9 kDa |
| Purity | > 80% as determined by SDS-PAGE and Coomassie blue staining |
| Concentration | >50 µg/mL as determined by microplate BCA method |
| Storage Buffer | 25 mM Tris.HCl, pH 7.3, 100 mM glycine, 10% glycerol |

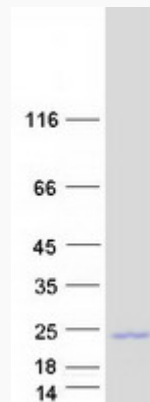
GENE INFORMATION

 Tel: 1-631-559-9269 1-516-512-3133

 Email: info@creative-biomart.com  Fax: 1-631-938-8127

 45-1 Ramsey Road, Shirley, NY 11967, USA

| | |
|------------------------|--|
| Gene Name | CLDN4 claudin 4 [Homo sapiens (human)] |
| Official Symbol | CLDN4 |
| Synonyms | CLDN4; claudin 4; CPER; CPE-R; CPETR; CPETR1; WBSCR8; hCPE-R; claudin-4; CPE-receptor; Clostridium perfringens enterotoxin receptor 1; Williams-Beuren syndrome chromosomal region 8 protein |
| Gene ID | 1364 |
| mRNA Refseq | NM_001305 |
| Protein Refseq | NP_001296 |
| MIM | 602909 |
| UniProt ID | O14493 |

SDS-PAGE


 Tel: 1-631-559-9269 1-516-512-3133

 Email: info@creative-biomart.com  Fax: 1-631-938-8127

 45-1 Ramsey Road, Shirley, NY 11967, USA