

## Active Recombinant Full Length Human CLDN4 Protein

Cat. No. CLDN4-30H Lot. No. (See product label)

### SPECIFICATION

<b>Product Overview</b>	Claudin 4 protein contains 209 amino acids (Met1-Val209; UniProt# NP_001296.1), and is displayed on nanoparticles that mimics the native protein conformation on the cell surface.
<b>Species</b>	Human
<b>Source</b>	HEK293T
<b>ProteinLength</b>	1-209 aa
<b>Description</b>	Claudin 4, also known as CLDN4, is an integral membrane protein with 4 transmembrane domains, two extracellular loops, two intracellular loops, both N-terminus and C-terminus ends towards the cytosol. Human Claudin 4 is a component of tight junction strands and may play a role in internal organ development and function during pre- and postnatal life. Claudin 4 can also be used as a marker for distinguishing malignant mesothelioma from lung cancer and uterine serous carcinoma. As a pancreatic cancer marker in cell-blocks of effusion specimens, it has also been found to have a superior performance to BerEp4 staining.
<b>Application</b>	Verified Applications: ELISA and Western blot for Claudin 4-specific antibody binding assays. Suggested Applications: ELISA for Claudin 4-specific antibody binding assays; animal immunization, RUO.
<b>Storage</b>	Store at -80 centigrade.

 Tel: 1-631-559-9269 1-516-512-3133

 Email: [info@creative-biomart.com](mailto:info@creative-biomart.com)  Fax: 1-631-938-8127

 45-1 Ramsey Road, Shirley, NY 11967, USA

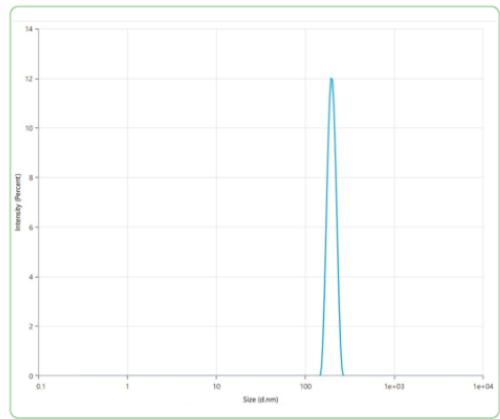
<b>Storage Buffer</b>	0.22µm filtered PBS, pH 7.4
<b>Shipping</b>	Frozen Dry Ice
<b>GENE INFORMATION</b>	
<b>Gene Name</b>	CLDN4 claudin 4 [ Homo sapiens (human) ]
<b>Official Symbol</b>	CLDN4
<b>Synonyms</b>	CLDN4; claudin 4; CPETR, CPETR1; claudin-4; Clostridium perfringens enterotoxin receptor 1; CPE R; hCPE R; WBSCR8; Williams Beuren syndrome chromosomal region 8 protein; CPE-receptor; Williams-Beuren syndrome chromosomal region 8 protein; CPER; CPE-R; CPETR; CPETR1; hCPE-R;
<b>Gene ID</b>	1364
<b>mRNA Refseq</b>	NM_001305
<b>Protein Refseq</b>	NP_001296
<b>MIM</b>	602909
<b>UniProt ID</b>	O14493

 Tel: 1-631-559-9269 1-516-512-3133

 Email: [info@creative-biomart.com](mailto:info@creative-biomart.com)  Fax: 1-631-938-8127

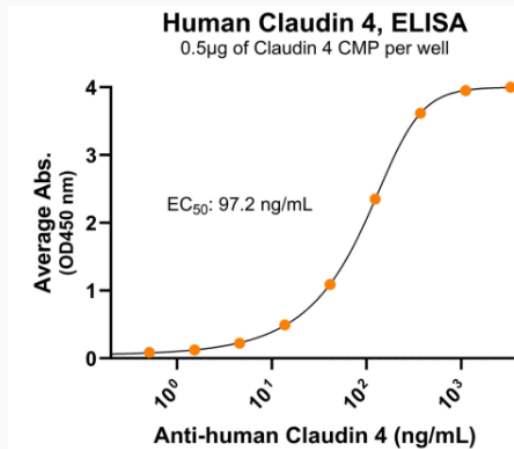
 45-1 Ramsey Road, Shirley, NY 11967, USA

### Dynamic Light Scattering



The mean peak diameter (nm) of the CMP is 199.2 with a range of 189.2-209.2 with more than 95% intensity as determined by dynamic light scattering (DLS).

### Bioactivity-Antibody Binding



Immobilized human Claudin 4 VLP at 5 µg/mL (100 µL/well) can bind monoclonal anti-human Claudin 4 antibody with half maximal effective concentration (EC50) range of 48.6-194.4 ng/mL (QC tested).

Tel: 1-631-559-9269 1-516-512-3133

Email: [info@creative-biomart.com](mailto:info@creative-biomart.com) Fax: 1-631-938-8127

45-1 Ramsey Road, Shirley, NY 11967, USA