

Recombinant Human CLDN4 Protein, Myc/DDK-tagged, C13 and N15-labeled

Cat. No. CLDN4-4751H **Lot. No.** (See product label)

SPECIFICATION

Product Overview

CLDN4 MS Standard C13 and N15-labeled recombinant protein (NP_001296) with a C-terminal MYC/DDK tag, was expressed in HEK293 cells.

Species

Human

Source

HEK293

Description

The protein encoded by this intronless gene belongs to the claudin family. Claudins are integral membrane proteins that are components of the epithelial cell tight junctions, which regulate movement of solutes and ions through the paracellular space. This protein is a high-affinity receptor for Clostridium perfringens enterotoxin (CPE) and may play a role in internal organ development and function during pre- and postnatal life. This gene is deleted in Williams-Beuren syndrome, a neurodevelopmental disorder affecting multiple systems.

Molecular Mass

22.1 kDa

AA Sequence

MASMGLQVMGIALAVLGWLAVMLCCALPMWRVTAFIGSNIVTSQTIWEGLWMNCVV
 QSTGQMCKVYDSLALPQDLQAARALVIISIIVAALGVLLSVVGGKCTNCLEDESAK
 AKTMIVAGVVFLLAGLMVIVPVSHTAHNIIQDFYNPLVASGQKREMGASLYVGWAAS
 GLLLLGGLLCCNCPRTDKPYSAKYSAARSAAASNYVTRTRPLEQKLISEEDLAAN
 DILDYKDDDDKV

Purity

> 80% as determined by SDS-PAGE and Coomassie blue staining

 Tel: 1-631-559-9269 1-516-512-3133

 Email: info@creative-biomart.com  Fax: 1-631-938-8127

 45-1 Ramsey Road, Shirley, NY 11967, USA

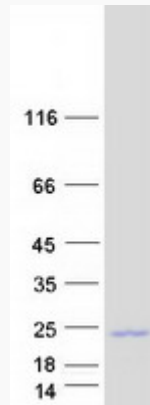
Stability	Stable for 3 months from receipt of products under proper storage and handling conditions.
Storage	Store at -80 centigrade. Avoid repeated freeze-thaw cycles.
Concentration	50 µg/mL as determined by BCA
Storage Buffer	100 mM glycine, 25 mM Tris-HCl, pH 7.3.
GENE INFORMATION	
Gene Name	CLDN4 claudin 4 [Homo sapiens (human)]
Official Symbol	CLDN4
Synonyms	CLDN4; claudin 4; CPETR, CPETR1; claudin-4; Clostridium perfringens enterotoxin receptor 1; CPE R; hCPE R; WBSCR8; Williams Beuren syndrome chromosomal region 8 protein; CPE-receptor; Williams-Beuren syndrome chromosomal region 8 protein; CPER; CPE-R; CPETR; CPETR1; hCPE-R;
Gene ID	1364
mRNA Refseq	NM_001305
Protein Refseq	NP_001296
MIM	602909
UniProt ID	O14493

 Tel: 1-631-559-9269 1-516-512-3133

 Email: info@creative-biomart.com  Fax: 1-631-938-8127

 45-1 Ramsey Road, Shirley, NY 11967, USA

SDS-PAGE



 Tel: 1-631-559-9269 1-516-512-3133

 Email: info@creative-biomart.com  Fax: 1-631-938-8127

 45-1 Ramsey Road, Shirley, NY 11967, USA