

Recombinant Full Length Human CLDN4 Protein, C-Flag-tagged

Cat. No. CLDN4-574HFL **Lot. No.** (See product label)

SPECIFICATION

Product Overview	Recombinant Full Length Human CLDN4 Protein, fused to Flag-tag at C-terminus, was expressed in Mammalian cells.
Species	Human
Source	Mammalian Cells
Description	The protein encoded by this intronless gene belongs to the claudin family. Claudins are integral membrane proteins that are components of the epithelial cell tight junctions, which regulate movement of solutes and ions through the paracellular space. This protein is a high-affinity receptor for Clostridium perfringens enterotoxin (CPE) and may play a role in internal organ development and function during pre- and postnatal life. This gene is deleted in Williams-Beuren syndrome, a neurodevelopmental disorder affecting multiple systems.
Form	25 mM Tris HCl, pH 7.3, 100 mM glycine, 10% glycerol.
Molecular Mass	21.9 kDa
AA Sequence	MASMGLQVMGIALAVLGWLAVMLCCALPMWRVTAFIGSNIVTSQTIWEGLWMNCVV QSTGQMCKVYDSL LALPQDLQAARALVIISIIVAALGVLLSVVGGKCTNCLEDESAK AKTMIVAGVVFLLAGLMVIVPVSMTA HNIQDFYNPLVASGQKREMGASLYVGWAA SGLLLLGGLLCCNCPRTDKPYSKSAARSAAASNYVTRTRPLEQKLISEEDLAA NDILDYKDDDDKV

 Tel: 1-631-559-9269 1-516-512-3133

 Email: info@creative-biomart.com  Fax: 1-631-938-8127

 45-1 Ramsey Road, Shirley, NY 11967, USA

Purity	> 80% as determined by SDS-PAGE and Coomassie blue staining.
Stability	Stable for 12 months from the date of receipt of the product under proper storage and handling conditions. Avoid repeated freeze-thaw cycles.
Storage	Store at -80 centigrade.
Concentration	>50 ug/mL as determined by microplate BCA method.
Preparation	Recombinant protein was captured through anti-DDK affinity column followed by conventional chromatography steps.
Protein Families	Druggable Genome, Transmembrane
Protein Pathways	Cell adhesion molecules (CAMs), Leukocyte transendothelial migration, Tight junction
Full Length	Full L.

GENE INFORMATION

Gene Name	CLDN4 claudin 4 [Homo sapiens (human)]
Official Symbol	CLDN4
Synonyms	CPER; CPE-R; CPETR; CPETR1; WBSR8; hCPE-R
Gene ID	1364
mRNA Refseq	NM_001305.5
Protein Refseq	NP_001296.1

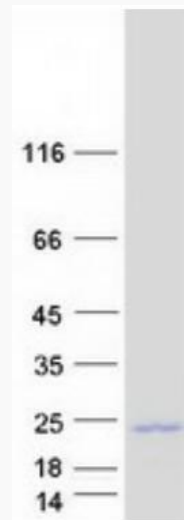
 Tel: 1-631-559-9269 1-516-512-3133

 Email: info@creative-biomart.com  Fax: 1-631-938-8127

 45-1 Ramsey Road, Shirley, NY 11967, USA

MIM 602909

UniProt ID O14493



Coomassie blue staining of purified CLDN4 protein.

 Tel: 1-631-559-9269 1-516-512-3133

 Email: info@creative-biomart.com  Fax: 1-631-938-8127

 45-1 Ramsey Road, Shirley, NY 11967, USA