

Active Recombinant Human CLDN5 Full Length Transmembrane protein(Nanodisc)

Cat. No. CLDN5-193H Lot. No. (See product label)

SPECIFICATION

Product Overview

Recombinant Human CLDN5 Full Length Transmembrane protein(O00501), was expressed in HEK293.

Species

Human

Source

HEK293

Form

Lyophilized from nanodisc solubilization buffer (20 mM Tris-HCl, 150 mM NaCl, pH 8.0). Normally 5% – 8% trehalose is added as protectants before lyophilization. Please see Certificate of Analysis for specific instructions.

Bio-activity

Elisa plates were pre-coated with Flag Tag CLDN5-Nanodisc (0.2µg/per well). Serial diluted anti-Flag monoclonal antibody solutions were added, washed, and incubated with secondary antibody before Elisa reading. From above data, the EC50 for anti-Flag monoclonal antibody binding with CLDN5-Nanodisc is 7.814ng/ml.

Molecular Mass

The human full length CLDN5 protein has a MW of 23.1 kDa.

Storage

Store at -20°C to -80°C for 12 months in lyophilized form. After reconstitution, if not intended for use within a month, aliquot and store at -80°C (Avoid repeated freezing and thawing). Lyophilized proteins are shipped at ambient temperature.

Reconstitution

It is recommended that sterile water be added to the vial to prepare a stock solution of 0.2 ug/ul. Centrifuge the vial at 4°C before opening to recover the entire contents.

 Tel: 1-631-559-9269 1-516-512-3133

 Email: info@creative-biomart.com  Fax: 1-631-938-8127

 45-1 Ramsey Road, Shirley, NY 11967, USA

Full Length Full L.

GENE INFORMATION

Gene Name [CLDN5 claudin 5 \[Homo sapiens \]](#)

Official Symbol [CLDN5](#)

Synonyms CLDN5; claudin 5; AWAL, TMVCF, transmembrane protein deleted in velocardiofacial syndrome; claudin-5; BEC1; CPETRL1; TMDVCF; transmembrane protein deleted in VCFS; transmembrane protein deleted in velocardiofacial syndrome; AWAL; TMVCF;

Gene ID [7122](#)

mRNA Refseq [NM_001130861](#)

Protein Refseq [NP_001124333](#)

MIM [602101](#)

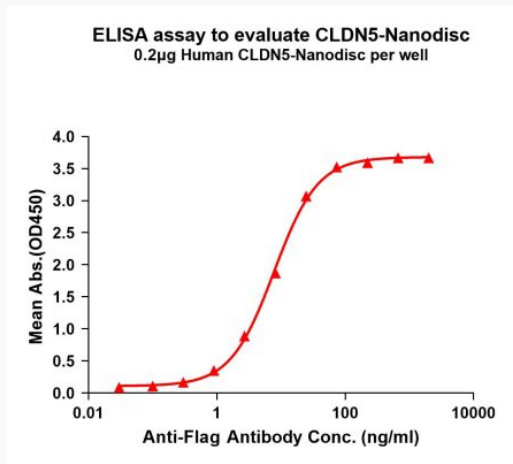
UniProt ID [O00501](#)

 Tel: 1-631-559-9269 1-516-512-3133

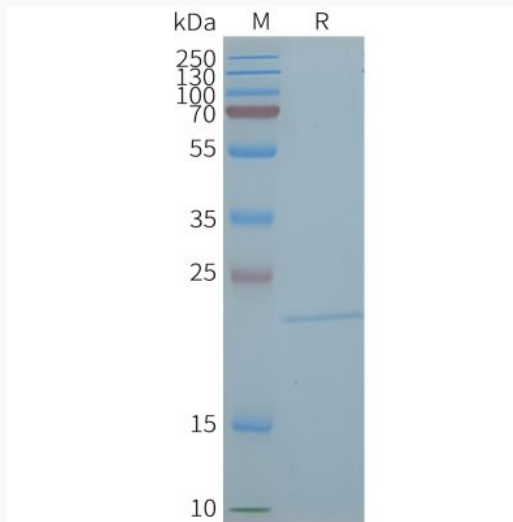
 Email: info@creative-biomart.com  Fax: 1-631-938-8127

 45-1 Ramsey Road, Shirley, NY 11967, USA

Activity



SDS-PAGE



 Tel: 1-631-559-9269 1-516-512-3133

 Email: info@creative-biomart.com  Fax: 1-631-938-8127

 45-1 Ramsey Road, Shirley, NY 11967, USA