

Recombinant Human CLDN5 protein(Met29-Arg81), hFc-tagged

Cat. No. CLDN5-194H Lot. No. (See product label)

SPECIFICATION

Product Overview	Recombinant Human CLDN5 protein(Met29-Arg81)(Met29-Arg81), fused with C-terminal hFc tag, was expressed in HEK293.
Species	Human
Source	HEK293
ProteinLength	Met29-Arg81
Form	Lyophilized from sterile PBS, pH 7.4. Normally 5 % – 8% trehalose is added as protectants before lyophilization.
Molecular Mass	The protein has a predicted molecular mass of 32.1 kDa after removal of the signal peptide. The apparent molecular mass of CLDN5-hFc is approximately 35-40 kDa due to glycosylation.
Purity	The purity of the protein is greater than 95% as determined by SDS-PAGE and Coomassie blue staining.
Storage	Store at -20°C to -80°C for 12 months in lyophilized form. After reconstitution, if not intended for use within a month, aliquot and store at -80°C (Avoid repeated freezing and thawing). Lyophilized proteins are shipped at ambient temperature.
Reconstitution	It is recommended that sterile water be added to the vial to prepare a stock solution of 0.2 ug/ul. Centrifuge the vial at 4°C before opening to recover the entire contents.

 Tel: 1-631-559-9269 1-516-512-3133

 Email: info@creative-biomart.com  Fax: 1-631-938-8127

 45-1 Ramsey Road, Shirley, NY 11967, USA

GENE INFORMATION

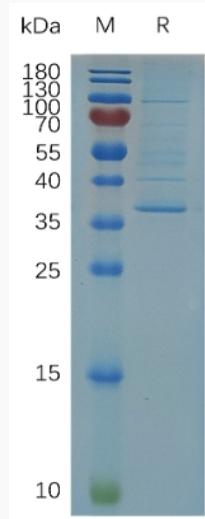
Gene Name	CLDN5 claudin 5 [Homo sapiens]
Official Symbol	CLDN5
Synonyms	CLDN5; claudin 5; AWAL, TMVCF, transmembrane protein deleted in velocardiofacial syndrome; claudin-5; BEC1; CPETRL1; TMDVCF; transmembrane protein deleted in VCFS; transmembrane protein deleted in velocardiofacial syndrome; AWAL; TMVCF;
Gene ID	7122
mRNA Refseq	NM_001130861
Protein Refseq	NP_001124333
MIM	602101
UniProt ID	O00501

 Tel: 1-631-559-9269 1-516-512-3133

 Email: info@creative-biomart.com  Fax: 1-631-938-8127

 45-1 Ramsey Road, Shirley, NY 11967, USA

SDS-PAGE



 Tel: 1-631-559-9269 1-516-512-3133

 Email: info@creative-biomart.com  Fax: 1-631-938-8127

 45-1 Ramsey Road, Shirley, NY 11967, USA