

Active Recombinant Full Length Human Claudin 6 Nanoparticles

Cat. No. CLDN6-08HFL Lot. No. (See product label)

SPECIFICATION

Species	Human
Source	HEK293T
ProteinLength	1-220 aa
Description	<p>Claudin 6, also known as CLDN6, is an integral membrane protein with 4 transmembrane domains, two extracellular loops, two intracellular loops, both N-terminus and C-terminus ends towards the cytosol. Human Claudin 6 is a member of Claudin protein family and involved in tight junction and cell-to-cell adhesion. It is highly and widely expressed on various tumor cells, and play critical role in cancer initiation and progression, and a promising target for cancer therapeutics.</p>
Applications	ELISA for Claudin-6 specific antibody binding assays; animal immunization, RUO
Storage	Store at -80 centigrade.
Storage Buffer	0.2 µm filtered PBS, pH 7.4
Shipping	Frozen Dry Ice

GENE INFORMATION

Gene Name	CLDN6 claudin 6 [Homo sapiens (human)]
------------------	--

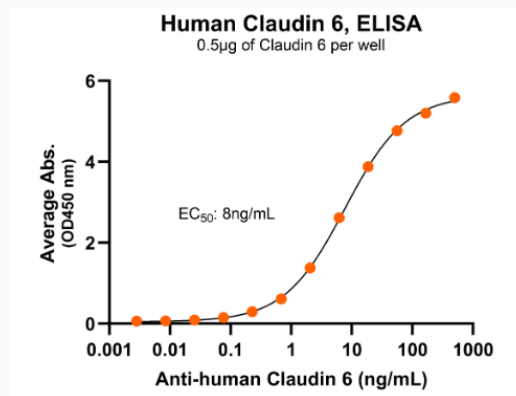
 Tel: 1-631-559-9269 1-516-512-3133

 Email: info@creative-biomart.com  Fax: 1-631-938-8127

 45-1 Ramsey Road, Shirley, NY 11967, USA

Official Symbol	CLDN6
Synonyms	CLDN6; claudin 6; claudin-6; skullin
Gene ID	9074
mRNA Refseq	NM_021195
Protein Refseq	NP_067018
MIM	615798
UniProt ID	P56747

Bioactivity-Antibody Binding



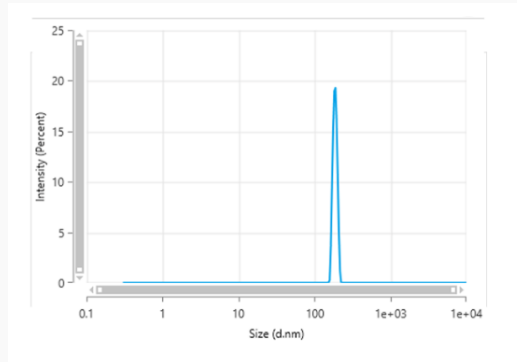
Immobilized human Claudin 6 VLP at 5 µg/mL (100 µL/well) can bind monoclonal anti-human Claudin 6 antibody with half maximal effective concentration (EC₅₀) range of 6.6-26.3 ng/mL (QC tested).

 Tel: 1-631-559-9269 1-516-512-3133

 Email: info@creative-biomart.com  Fax: 1-631-938-8127

 45-1 Ramsey Road, Shirley, NY 11967, USA

Dynamic Light Scattering



The mean peak diameter (nm) of the CMP is 177.6 with a range of 162.9-196.6 with more than 95% intensity as determined by dynamic light scattering (DLS).

 Tel: 1-631-559-9269 1-516-512-3133

 Email: info@creative-biomart.com  Fax: 1-631-938-8127

 45-1 Ramsey Road, Shirley, NY 11967, USA