

## Recombinant Human CLDN6 protein

Cat. No. CLDN6-137H Lot. No. (See product label)

### SPECIFICATION

<b>Product Overview</b>	Recombinant Human CLDN6 protein(P56747)(Met1-Val220) was expressed in HEK293.
<b>Species</b>	Human
<b>Source</b>	HEK293
<b>ProteinLength</b>	Met1-Val220
<b>Tag</b>	Non
<b>Form</b>	Lyophilized from 0.22µm filtered solution in PBS (pH 7.4). Normally 8% trehalose is added as protectant before lyophilization.
<b>Bio-activity</b>	Immobilized Human Claudin 6 VLP at 1µg/ml (100µl/Well). Dose response curve for Anti-Claudin 6 Antibody, mFc Tag with the EC50 of 4.8ng/ml determined by ELISA.
<b>Molecular Mass</b>	The protein has a predicted MW of 24.5 kDa.
<b>Endotoxin</b>	Less than 1EU per µg by the LAL method.
<b>Purity</b>	> 95% as determined by HPLC.
<b>Storage</b>	Reconstituted protein stable at -80°C for 12 months, 4°C for 1 week. Use a manual defrost freezer and avoid repeated freeze-thaw cycles.

 Tel: 1-631-559-9269 1-516-512-3133

 Email: [info@creative-biomart.com](mailto:info@creative-biomart.com)  Fax: 1-631-938-8127

 45-1 Ramsey Road, Shirley, NY 11967, USA

**Reconstitution** Centrifuge tubes before opening. Reconstituting to a concentration more than 100 µg/ml is recommended. Dissolve the lyophilized protein in distilled water.

## GENE INFORMATION

**Gene Name** CLDN6 claudin 6 [ Homo sapiens ]

**Official Symbol** CLDN6

**Synonyms** CLDN6; claudin 6; claudin-6; skullin;

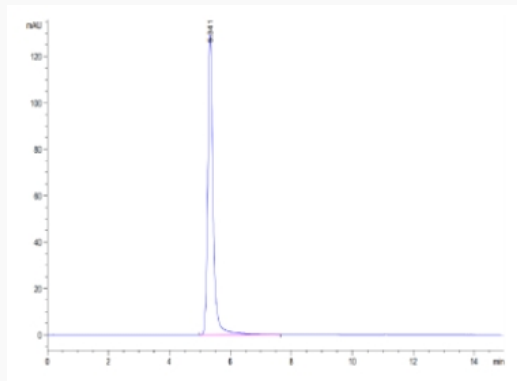
**Gene ID** 9074

**mRNA Refseq** NM\_021195

**Protein Refseq** NP\_067018

**UniProt ID** P56747

### Tris-Bis PAGE

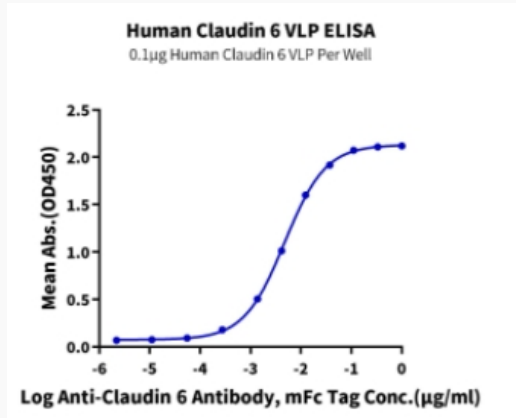


 Tel: 1-631-559-9269 1-516-512-3133

 Email: [info@creative-biomart.com](mailto:info@creative-biomart.com)  Fax: 1-631-938-8127

 45-1 Ramsey Road, Shirley, NY 11967, USA

ELISA Data



 Tel: 1-631-559-9269 1-516-512-3133

 Email: [info@creative-biomart.com](mailto:info@creative-biomart.com)  Fax: 1-631-938-8127

 45-1 Ramsey Road, Shirley, NY 11967, USA