

Active Recombinant Human CLDN6 Full Length Protein, Flag-tagged, Nanodisc

Cat. No. CLDN6-138H **Lot. No.** (See product label)

SPECIFICATION

Product Overview	Active Recombinant Human CLDN6 Full Length Protein(NM_021195), fused with Flag tag, was expressed in HEK293.
Species	Human
Source	HEK293
ProteinLength	220 aa
Form	Supplied in nanodisc solubilization buffer (20 mM Tris-HCl, 150 mM NaCl, pH 8.0)
Bio-activity	Elisa plates were added with Flag Tag CLDN6-Nanodisc (0.5µg/per well) on an anti-Flag monoclonal antibody pre-coated (0.5µg/per well) plate. Serial diluted anti-CLDN6 monoclonal antibody solutions were added, washed, and incubated with secondary antibody before Elisa reading. From above data, the EC50 for anti-CLDN6 monoclonal antibody binding with CLDN6-Nanodisc is 66.99ng/ml.
Molecular Mass	The human full length CLDN6 Protein has a MW of 23 kDa
Storage	The product should be stored at -80°C. Please do not repeated freeze-thaw cycles.
Reconstitution	It is recommended that sterile water be added to the vial to prepare a stock solution of 0.2 ug/ul. Centrifuge the vial at 4°C before opening to recover the entire contents.

 Tel: 1-631-559-9269 1-516-512-3133

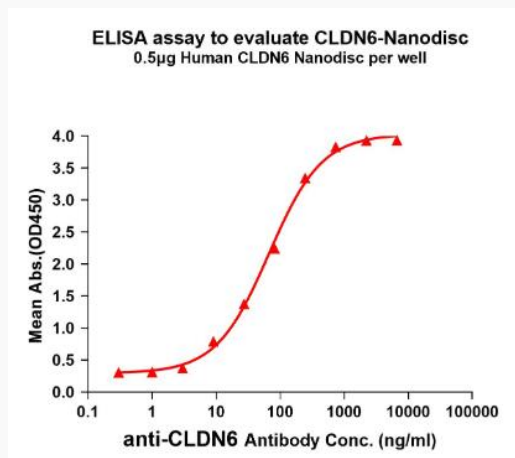
 Email: info@creative-biomart.com  Fax: 1-631-938-8127

 45-1 Ramsey Road, Shirley, NY 11967, USA

GENE INFORMATION

Gene Name	CLDN6 claudin 6 [Homo sapiens]
Official Symbol	CLDN6
Synonyms	CLDN6; claudin 6; claudin-6; skullin;
Gene ID	9074
mRNA Refseq	NM_021195
Protein Refseq	NP_067018
UniProt ID	P56747

ELISA

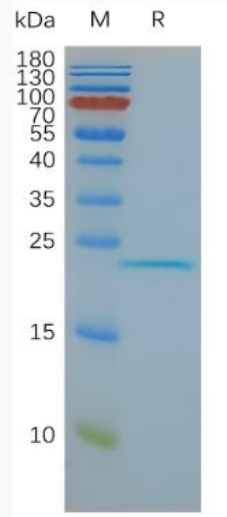


 Tel: 1-631-559-9269 1-516-512-3133

 Email: info@creative-biomart.com  Fax: 1-631-938-8127

 45-1 Ramsey Road, Shirley, NY 11967, USA

SDS-PAGE



 Tel: 1-631-559-9269 1-516-512-3133

 Email: info@creative-biomart.com  Fax: 1-631-938-8127

 45-1 Ramsey Road, Shirley, NY 11967, USA